



**MYVAC™**

# G SERIES

—气环漩涡真空泵  
Air ring vortex vacuum pump



# About us

Thanks for having you!

感恩有你!

KSK真空技术有限公司是马来西亚高级真空泵供应商之一。在这个快速发展的行业中，我们提供各种真空和压力设备。我们还提供从最简单的真空使用到完整的系统应用解决方案的完整解决方案。我们提供其他相关设备，例如气动或气动齿轮电动机，有润滑或非润滑型号。我们提供多种工业真空泵类型，可覆盖各种工作压力。这些包括无油/干式和油浸式旋转叶片。无油/干式旋转螺丝；再生鼓风机和径向鼓风机。

KSK Vacuum Technology Sdn Bhd is one of Malaysia's premium vacuum pump suppliers. In this rapid growth industry, we provide a wide range of vacuum and pressure equipment. We also provide a complete solution ranging from the simplest vacuum usage to complete system application solutions. We offering other related equipment such as Air Motors and air-powered Gear Motors are available in lubricated or non-lubricated models.

We offer a variety of industrial vacuum pump types that cover a wide range of operating pressures. These include both oil-less/dry and oil flooded rotary vane; oil-less/dry rotary screw; regenerative blowers, and radial blowers.

# Technology 坚持技术创新

Research and development 以优质产品、优质技术、优质服务服务于机电行业



G系列气环式真空泵采用宽压双频50hz-60hz。保护等级IP54 (绝缘等级F)的电机为特色。这使得它为全球通用的最佳解决方案。它们可以直接对接欧洲、美洲的应用标准。全部工序采用CNC数控加工和严密精确的质检工艺，保证产品正负压差超过同行业平均水平30%。而这些产品我们都备有库存，可以随时满足您的要求。

The G series air-ring vacuum pump adopts wide pressure double frequency 50hz-60hz. Protection level IP54(insulation level F) motor features. This makes it the best solution for the world. They can directly interface with European and American application standards. Total workCNC numerical control process and strict and accurate quality inspection process are adopted to ensure that the positive and negative pressure difference exceeds the average level of the same industry by 30 %. And these products are available in stock, you can meet your requirements at any time.

# contents

## G 系列气环风机概述

G Series side channel blower-----01-02

## 2GH 系列

2GH series-----03-26

## 4GH 系列

4GH series-----27-34

## 安装尺寸

Dimension-----35-46

## 附录

Annex-----47-50

技术创新的**经典之作**

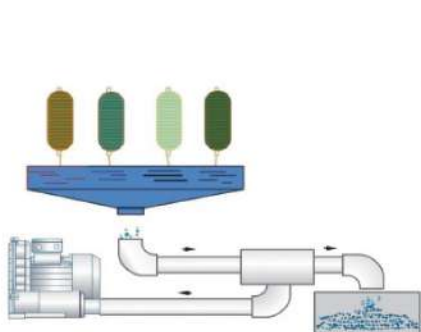
SIDE CHANNEL VACUUM PUMP  
COMPRESSOR

# G 系列气环风机概述

G Series side channel blower

## 应用范围 Applications

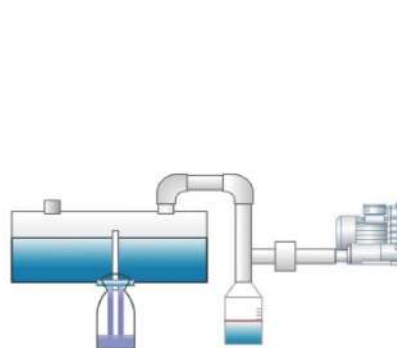
工业吸尘器	Industrial vacuum cleaners	物料提升和保持	Enhance and maintain the material
塑料行业	Plastics industry	土壤修复	Soil treatment
包装行业	Packaging industry	激光打印机	Laser printers
纺织行业	Textile industry	干燥建筑物	Drying out buildings
污水处理曝气	Ventilation of sewage treatment plants	印刷和造纸工业	Printing and paper industry
灌装系统	Filling system	工业流水线	Industrial pipeline
牙科真空设备	Dental vacuum equipment	游泳池设备 / 按摩浴缸	Swimming pool technology/Jacuzzi
气体分析	Gas analysis	气体增压	Gas booster
鱼塘增氧	Increases oxygen fishpond	真空包装系统	Vacuum packag system



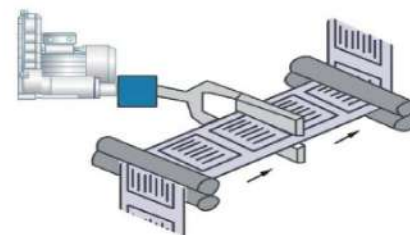
G 系列风机用于纺织行业



G 系列风机用于污水处理



G 系列风机用于灌装系统



G 系列风机用于印刷行业

## 全球通用 永不落后

Ex stock for use world-wide

G 系列气环式风机以采用宽压双频。保护等级 IP54（绝缘等级 F）的电机为特色。这使得它成为全球通用的最佳解决方案。它们可以不经任何的改动和测试就在欧洲、美洲和亚洲使用，而且这些产品我们都备有库存，可以随时满足您的需求。

The G\_series side channel blower feature voltage range motors for 50Hz and 60Hz in protection class IP54(insulation class F) This makes them the ideal solution for world wide use.They can be used without any modifications or tests in Europe,America and Asia.They are mostly available ex stock.They are available for your requirements anytime.

## G 系列气环泵工作原理

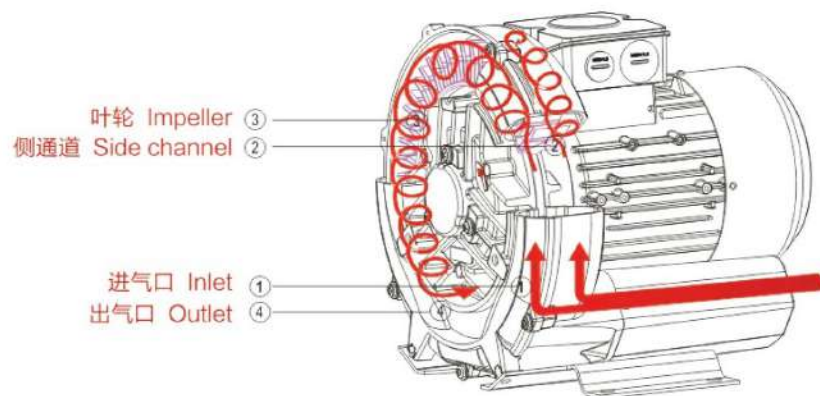
G\_series operating principle

G 系列的叶轮直接安装在电机转子上，是完全地无接触压缩。由于泵轴承安装在压缩腔外，所以即便工作在最大的压差下，也能确保机器的最大工作可靠性。

气体由**进气口 1**吸入，当它进入**侧通道 2**以后，旋转**叶轮 3**在旋转方向上给气体一个速度，同时叶片上的离心力使气体向外加速并压力增加，随着旋转的进行，气体的动能增加，使得沿侧通道的气体压力进一步增加。随着侧通道在出口初变窄，气体被挤出叶片并通过**出气口 4**排出泵体。

The impellers in the R\_series machines are mounted directly on the motor shaft for noncontact compression entirely without friction. Maximum operational reliability,even at high differential pressures,is ensured by the arrangement of the bearings outside the compression chamber.

The gas is taken in through the **inlet 1**.As it enters the **side channel 2**,the rotating **impeller 3** imparts velocity to the gas in the direction of rotation.Centrifugal force in the impeller blades accelerates the gas outward and the pressure increase.Every rotation adds kinetic energy,resulting in the further increase of the pressure along the side channel. The side channel narrows at the rotor,sweeping the gas off the impeller blades and discharging it through the **outlet 4** where it exits the side channel blower.



技术创新的经典之作  
CLASSICS WITH INNOVATIVE TECHNOLOGY



**2GH 防爆【非标定制】**  
2GH Explosion proof Specific production



**2GH 单级和双级**  
2GH Single and double stage

2019创新-智能变频静音

Smart frequency conversion silent sound

## 木工雕刻机开料机首选

智能变频系统气环真空泵，电机采用国际先进技术、稀土变频电动机，具有超高效、长寿命、低噪音、免维护等特点是节能专家。



2GH 双级变频静音

2 GH dual-frequency conversion silent



2GH双级变频

2 GH dual frequency conversion

智能变频真空泵工作过程负压相对稳定，最高负压可达-65kpa，流量最大480m<sup>3</sup>/h 随工况变化负压波动较小智能变频真空泵综合工况加权平均每小时耗电量（按7.5kw额定计算）节省3.3度，每天按8小时，8小时\*3.3度=26.4度每度1.2元，每天节省32元，每年节省电费达万元



# 气环风机的选型和订购参数

Side channel blower selection and ordering parameters

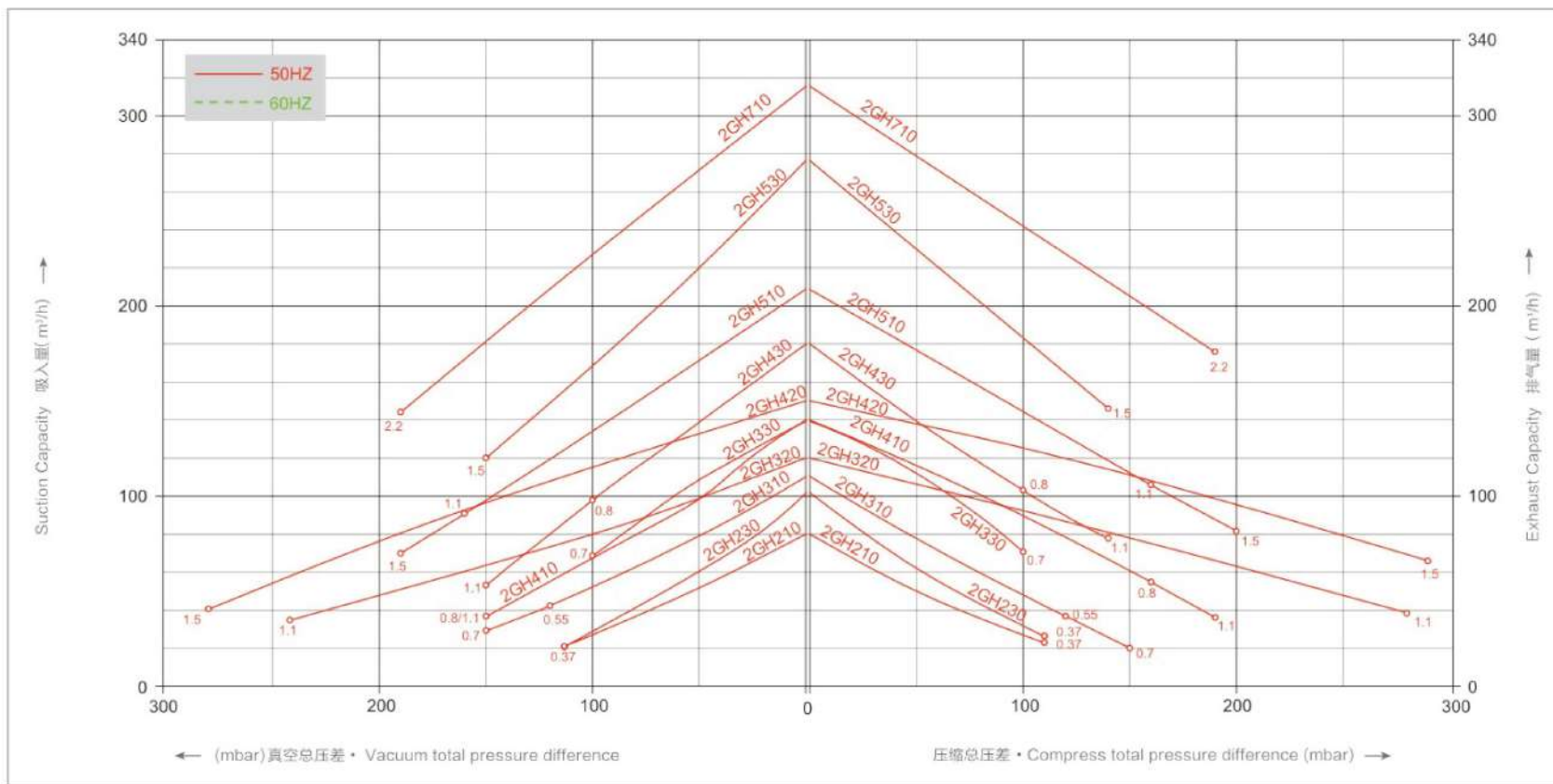
订购型号	电机				重量	噪音	最大流量	最高真空	最高压力	卸压阀
	频率	额定								
		输出功率	电压	电流						Pressure relief valve Number × type
Order No.	MOTOR				weight approx	Sound pressure level	Maximum airflow	Maximum Vacuum	Maximum pressure	Pressure relief valve Number × type
	Frequency	Rated								
	Hz	output	voltage	current	KG	dB(A)	m <sup>3</sup> /h	mbar	mbar	
2GH 210-A11	50	0.37	230	2.7	11	53	80	-110	110	1 x 2BX2 110/...141
	60	0.45	230	3.3		56	96	-130	140	1 x 2BX2 114/...142
2GH 230-A11	50	0.37	230	2.7	11	54	100	-110	110	1 x 2BX2 110/...141
	60	0.45	230	3.3		57	120	-130	140	1 x 2BX2 114/...142
2GH 310-A01	50	0.55	230	3.9	13	55	100	-120	120	1 x 2BX2 110/...141
	60	0.62	230	4.4		57	120	-130	150	1 x 2BX2 114/...142
2GH 310-A11	50	0.7	230	5.0	14	55	100	-150	150	1 x 2BX2 110/...141
	60	0.8	230	5.7		57	120	-150	160	1 x 2BX2 114/...142
2GH 320-A31	50	1.1	230	7.0	17	58	120	-240	280	1 x 2BX2 110/...141
	60	1.3	230	8.4		60	145	-230	260	1 x 2BX2 114/...142
2GH 330-A11	50	0.7	230	5.0	14	56	145	-100	100	1 x 2BX2 110/...141
	60	0.8	230	5.7		58	165	-110	100	1 x 2BX2 114/...142
2GH 410-A01	50	0.7	230	5.0	15	60	145	-120	120	1 x 2BX2 110/...141
	60	0.8	230	5.7		62	175	-130	130	1 x 2BX2 114/...142
2GH 410-A11	50	0.8	230	5.2	15	63	145	-150	160	1 x 2BX2 110/...141
	60	0.9	230	5.8		64	175	-160	140	1 x 2BX2 114/...142
2GH 410-A21	50	1.1	230	7.0	16	63	145	-150	190	1 x 2BX2 110/...141
	60	1.3	230	8.4		64	175	-180	190	1 x 2BX2 114/...142
2GH 420-A31	50	1.5	230	9.4	26	66	150	-280	290	1 x 2BX2 110/...141
	60	1.75	230	11		69	180	-250	280	1 x 2BX2 114/...142
2GH 430-A11	50	0.8	230	5.2	16	64	180	-100	110	1 x 2BX2 110/...141
	60	0.9	230	5.8		66	210	-100	110	1 x 2BX2 114/...142
2GH 430-A21	50	1.1	230	7.0	17	64	180	-150	140	1 x 2BX2 110/...141
	60	1.3	230	8.4		66	210	-140	130	1 x 2BX2 114/...142
2GH 510-A11	50	1.1	230	7.0	21	64	210	-160	160	1 x 2BX2 110/...145
	60	1.3	230	8.4		70	255	-150	160	1 x 2BX2 114/...146
2GH 510-A21	50	1.5	230	9.4	24	64	210	-190	200	1 x 2BX2 110/...145
	60	1.75	230	11		70	255	-180	180	1 x 2BX2 114/...146
2GH 530-A21	50	1.5	230	9.4	26	65	270	-150	140	1 x 2BX2 110/...145
	60	1.75	230	11		71	330	-120	110	1 x 2BX2 114/...146
2GH 610-A11	50	2.2	230	13.7	29	70	265	-230	220	1 x 2BX2 110/...145
	60	2.55	230	16		72	315	-250	230	1 x 2BX2 114/...146
2GH 710-A11	50	2.2	230	13.7	30	72	318	-190	190	1 x 2BX2 110/...145
	60	2.55	230	16		74	376	-190	200	1 x 2BX2 114/...146

# 技术参数图表

## Technical Parameters

下面的性能曲线是在抽吸 15°C 空气，排气压力 1013mbar 的工况下测出的，允差 ± 10%，吸入空气和环境温度不超过 25°C 时，仍可达到图示总压差。

The performance curves are valid for pumping air at 15°C at the inlet flanges with an air pressure of 1013 mbar and atolerance of ±10%.The total pressure differences are valid up to an intake and ambient tempratruue of 25°C .





# 气环风机的选型和订购参数

Side channel blower selection and ordering parameters

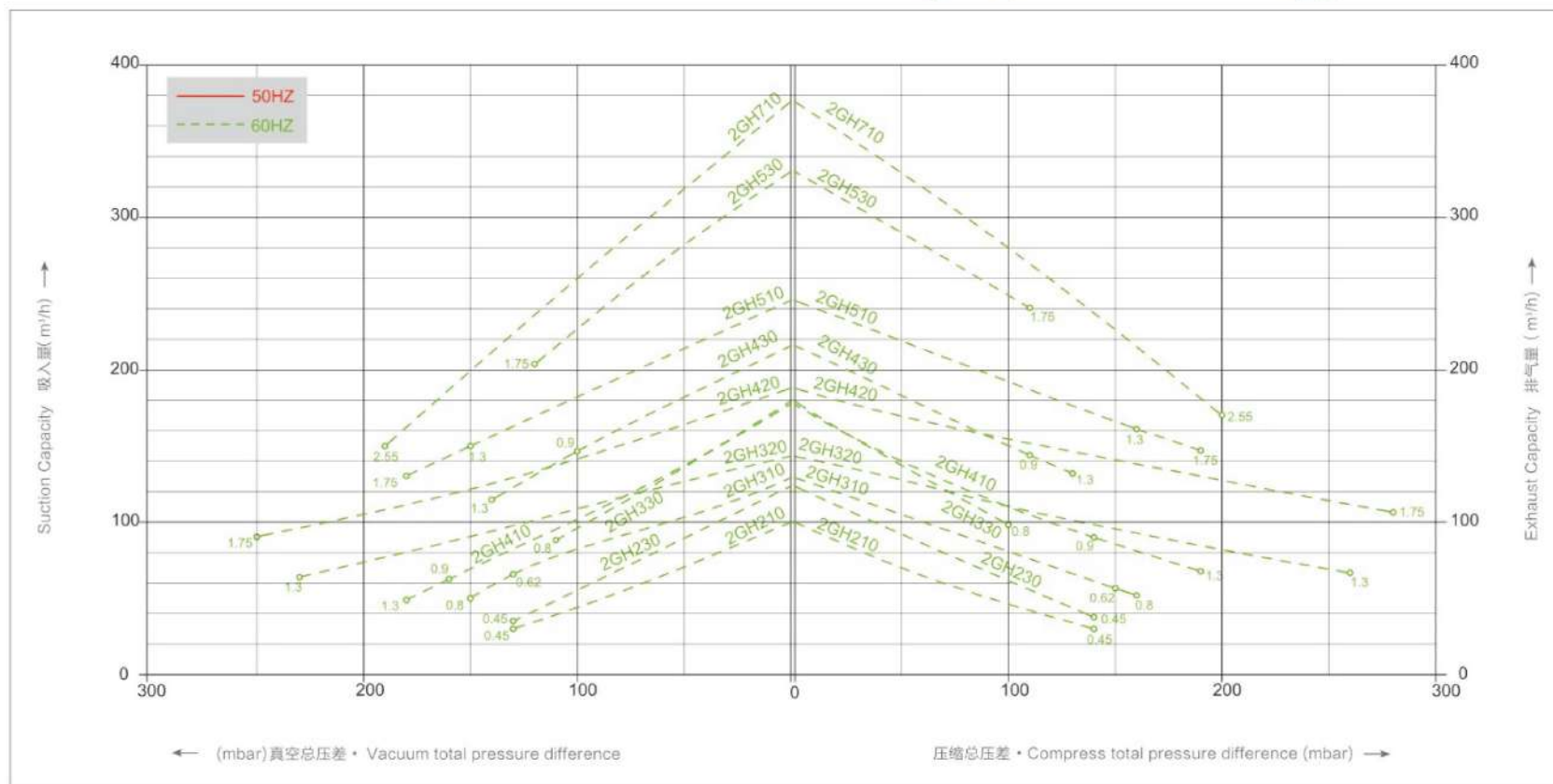
订购型号	电机				重量	噪音	最大流量	最高真空	最高压力	卸压阀
	频率	额定								数目 × 型号
Order No.		MOTOR			weight approx	Sound pressure level	Maximum airflow	Maximum Vacuum	Maximum pressure	Pressure relief valve
	Frequency	Rated								Number × type
		输出功率	电压	电流						
	HZ	KW	V	A	KG	dB(A)	m <sup>3</sup> /h	mbar	mbar	
2GH 210-V15	50	0.37	115/230	5.4/2.7	11	53	80	-110	110	1 x 2BX2 110/....141
	60	0.45	115/230	6.6/3.3		56	96	-130	140	1 x 2BX2 114/....142
2GH 230-V15	50	0.37	115/230	5.4/2.7	11	54	101	-110	110	1 x 2BX2 110/....141
	60	0.45	115/230	6.6/3.3		57	121	-110	100	1 x 2BX2 114/....142
2GH 410-V25	50	1.1	115/230	14/7.0	16	63	148	-150	190	1 x 2BX2 110/....141
	60	1.3	115/230	16.8/8.4		64	190	-180	190	1 x 2BX2 114/....142
2GH 420-V45	50	1.5	115/230	18.8/9.4	27	66	150	-280	260	1 x 2BX2 110/....141
	60	1.75	115/230	22/11		69	190	-280	260	1 x 2BX2 114/....142
2GH 430-V25	50	1.1	115/230	14/7.0	16	64	180	-150	140	1 x 2BX2 110/....141
	60	1.3	115/230	16.8/8.4		65	212	-140	130	1 x 2BX2 110/....141
2GH 490-V25	50	1.1	115/230	14/7.0	17	63	142	-110	120	1 x 2BX2 110/....141
	60	1.3	115/230	16.8/8.4		64	172	-140	140	1 x 2BX2 114/....142
2GH 510-V35	50	1.5	115/230	18.8/9.4	26	64	210	-190	200	1 x 2BX2 110/....145
	60	1.75	115/230	22/11		70	255	-180	180	1 x 2BX2 110/....146
2GH 530-V35	50	1.5	115/230	18.8/9.4	26	65	270	-150	140	1 x 2BX2 110/....141
	60	1.75	115/230	22/11		71	325	-120	110	1 x 2BX2 114/....146

# 技术参数图表

## Technical Parameters

下面的性能曲线是在抽吸 15°C 空气，排气压力 1013mbar 的工况下测出的，允差 ± 10%，吸入空气和环境温度不超过 25°C 时，仍可达到图示总压差。

The performance curves are valid for pumping air at 15°C at the inlet flanges with an air pressure of 1013 mbar and tolerance of ± 10%. The total pressure differences are valid up to an intake and ambient temperature of 25°C.





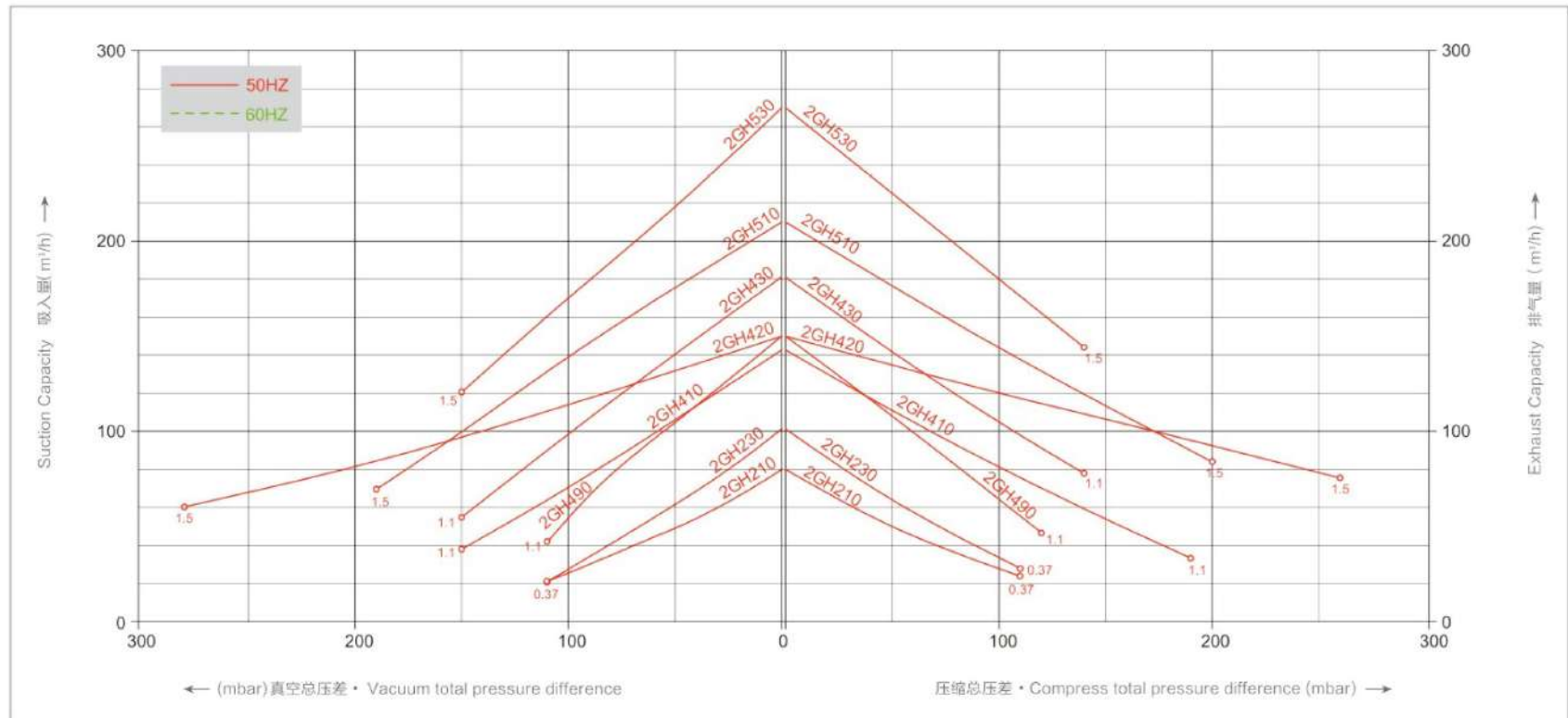
# 技术参数图表

## Technical Parameters



下面的性能曲线是在抽吸 15℃ 空气，排气压力 1013mbar 的工况下测出的，允差 ± 10%，吸入空气和环境温度不超过 25℃ 时，仍可达到图示总压差。

The performance curves are valid for pumping air at 15 °C at the inlet flanges with an air pressure of 1013 mbar and atolerance of ± 10%. The total pressure differences are valid up to an intake and ambient temprature of 25°C .

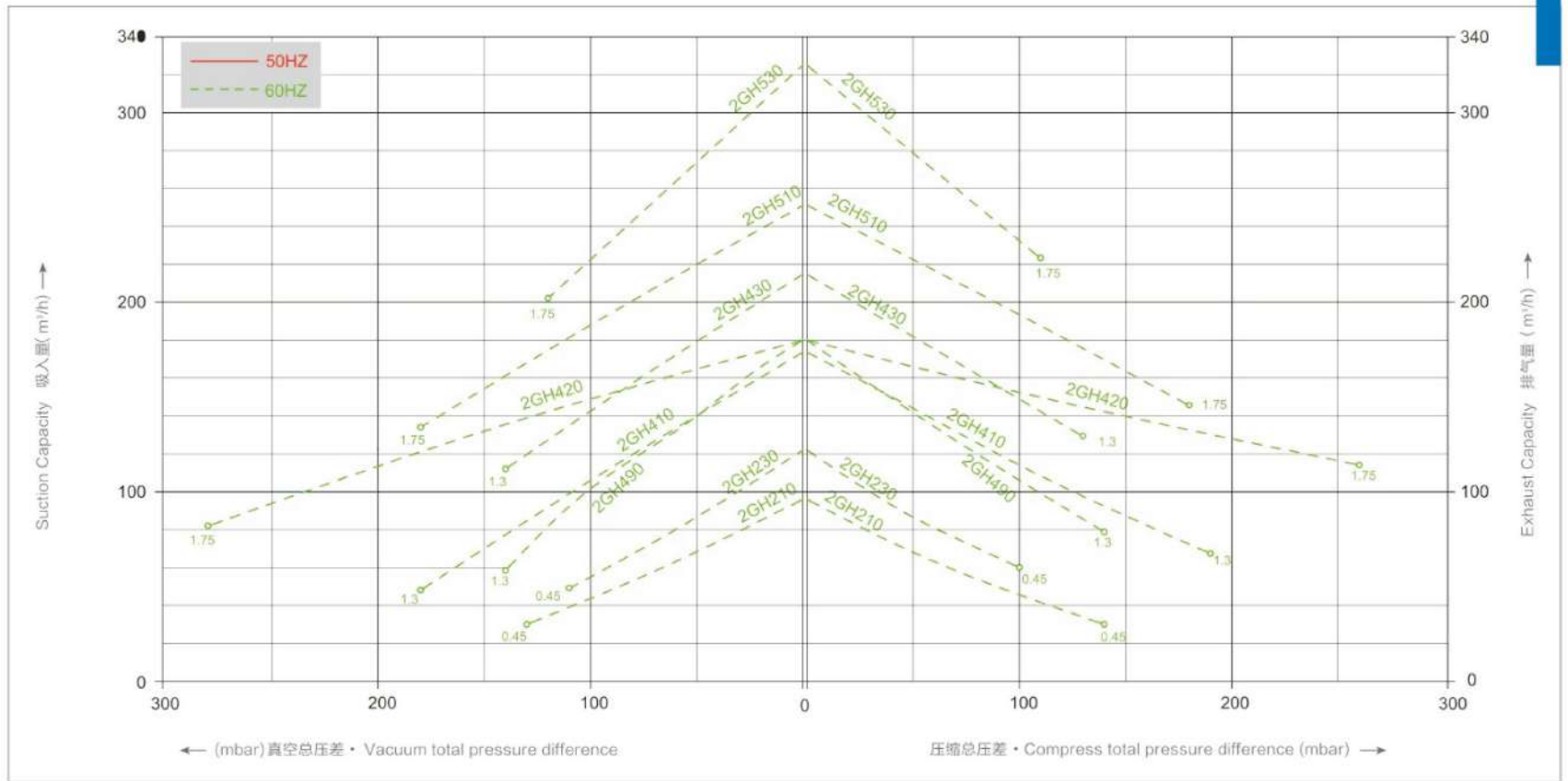


# 技术参数图表

## Technical Parameters

下面的性能曲线是在抽吸 15°C 空气，排气压力 1013mbar 的工况下测出的，允差 ± 10%，吸入空气和环境温度不超过 25°C 时，仍可达到图示总压差。

The performance curves are valid for pumping air at 15°C at the inlet flanges with an air pressure of 1013 mbar and atolerance of ±10%.The total pressure differences are valid up to an intake and ambient tempratruue of 25°C .





# 气环风机的选型和订购参数

Side channel blower selection and ordering parameters

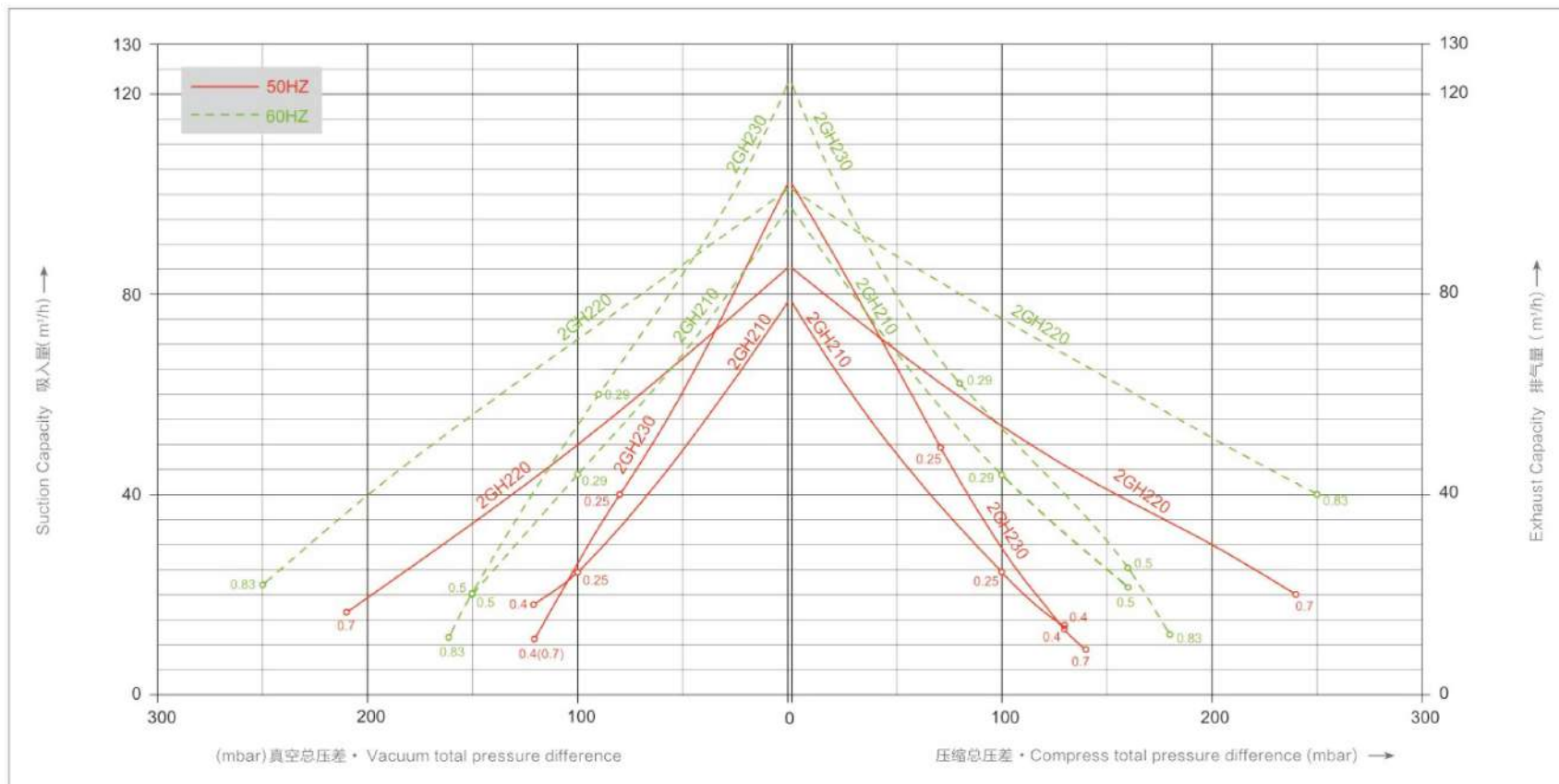
订购型号	电机				重量	噪音	最大流量	最高真空	最高压力	卸压阀
	频率	额定								数目 × 型号
		输出功率	电压	电流						
Order No.	MOTOR				weight approx	Sound pressure level	Maximum airflow	Maximum Vacuum	Maximum pressure	Pressure relief valve
	Frequency	Rated								Number × type
		output	voltage	current						
	HZ	KW	V	A	KG	dB(A)	m <sup>3</sup> /h	mbar	mbar	
2GH 210-H06	50	0.25	200-240 Δ /345-415Y	2.1 Δ /1.2Y	9	53	80	-100	100	1 × 2BX2 110/....141
	60	0.29	220-275 Δ /380-480Y	2.0 Δ /1.15Y		56	98	-100	100	1 × 2BX2 114/....142
2GH 210-H16	50	0.4	200-240 Δ /345-415Y	1.85 Δ /1.07Y	10	53	80	-120	130	1 × 2BX2 110/....141
	60	0.5	220-275 Δ /380-480Y	2.3 Δ /1.33Y		56	98	-150	160	1 × 2BX2 114/....142
2GH 220-H26	50	0.7	200-240 Δ /345-415Y	3.07 Δ /1.77Y	15	55	85	-210	240	1 × 2BX2 110/....141
	60	0.83	220-275 Δ /380-480Y	4.16 Δ /2.4Y		61	102	-250	250	1 × 2BX2 114/....142
2GH 230-H06	50	0.25	200-240 Δ /345-415Y	2.1 Δ /1.2Y	10	54	105	-80	70	1 × 2BX2 110/....141
	60	0.29	220-275 Δ /380-480Y	1.7 Δ /1.0Y		57	120	-90	80	1 × 2BX2 114/....142
2GH 230-H16	50	0.4	200-240 Δ /345-415Y	1.85 Δ /1.07Y	11	54	105	-120	130	1 × 2BX2 110/....141
	60	0.5	220-275 Δ /380-480Y	2.3 Δ /1.33Y		57	120	-150	160	1 × 2BX2 114/....142
2GH 230-H26	50	0.7	200-240 Δ /345-415Y	3.07 Δ /1.77Y	12	54	105	-120	140	1 × 2BX2 110/....141
	60	0.83	220-275 Δ /380-480Y	4.16 Δ /2.4Y		57	120	-160	180	1 × 2BX2 114/....142

# 技术参数图表

## Technical Parameters

下面的性能曲线是在抽吸 15°C 空气，排气压力 1013mbar 的工况下测出的，允差 ± 10%，吸入空气和环境温度不超过 25°C 时，仍可达到图示总压差。

The performance curves are valid for pumping air at 15°C at the inlet flanges with an air pressure of 1013 mbar and atolerance of ± 10%.The total pressure differences are valid up to an intake and ambient tempruue of 25°C .





# 气环风机的选型和订购参数

Side channel blower selection and ordering parameters

订购型号	电机				重量	噪音	最大流量	最高真空	最高压力	卸压阀
	频率	额定								数目 × 型号
		输出功率	电压	电流						
Order No.	MOTOR				weight approx	Sound pressure level	Maximum airflow	Maximum Vacuum	Maximum pressure	Pressure relief valve
	Frequency	Rated								Number × type
		output	voltage	current						
	HZ	KW	V	A	KG	dB(A)	m <sup>3</sup> /h	mbar	mbar	
2GH 310-H06	50	0.55	200-240 Δ /345-415Y	2.42 Δ /1.4Y	11	55	100	-110	120	1 × 2BX2 110/....141
	60	0.63	220-275 Δ /380-480Y	2.91 Δ /1.68Y		57	120	-110	120	1 × 2BX2 114/....142
2GH 310-H16	50	0.7	200-240 Δ /345-415Y	3.07 Δ /1.77Y	12	55	100	-150	150	1 × 2BX2 110/....141
	60	0.83	220-275 Δ /380-480Y	4.16 Δ /2.4Y		57	120	-150	140	1 × 2BX2 114/....142
2GH 320-H26	50	0.85	200-240 Δ /345-415Y	3.29 Δ /1.9Y	17	58	110	-200	230	1 × 2BX2 110/....141
	60	0.95	220-275 Δ /380-480Y	3.67 Δ /2.12Y		60	130	-240	240	1 × 2BX2 114/....142
2GH 320-H36	50	1.3	200-240 Δ /345-415Y	5.02 Δ /2.9Y	18	58	110	-280	290	1 × 2BX2 110/....141
	60	1.5	220-275 Δ /380-480Y	5.89 Δ /3.4Y		60	130	-300	400	1 × 2BX2 114/....142
2GH 330-H06	50	0.55	200-240 Δ /345-415Y	2.42 Δ /1.4Y	12	56	140	-60	60	1 × 2BX2 110/....141
	60	0.63	220-275 Δ /380-480Y	2.91 Δ /1.68Y		58	165	-50	50	1 × 2BX2 114/....142
2GH 330-H16	50	0.7	200-240 Δ /345-415Y	3.07 Δ /1.77Y	13	56	140	-100	100	1 × 2BX2 110/....141
	60	0.83	220-275 Δ /380-480Y	4.16 Δ /2.4Y		58	165	-115	100	1 × 2BX2 114/....142

# 技术参数图表

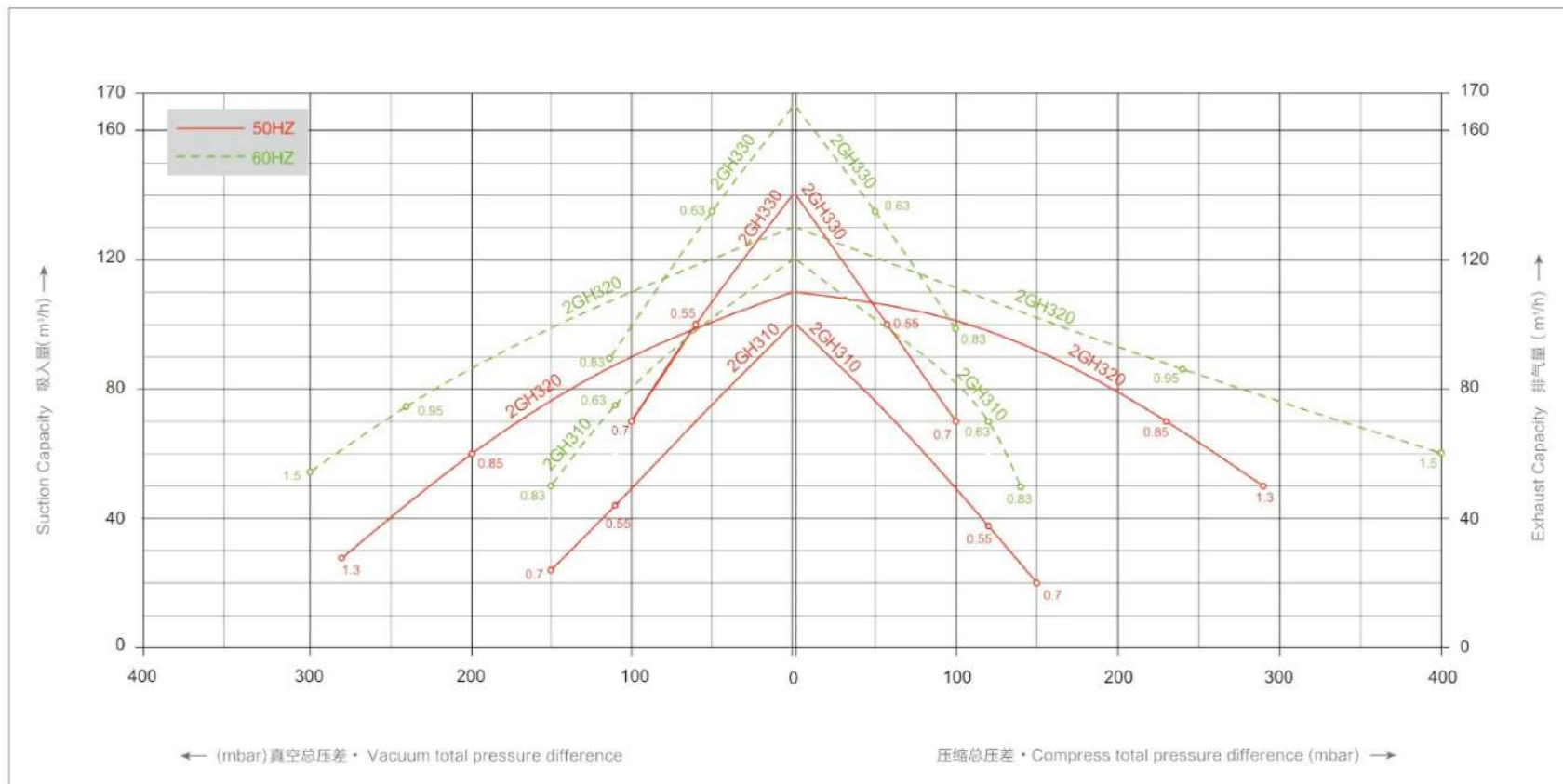
## Technical Parameters

下面的性能曲线是在抽吸 15℃ 空气，排气压力 1013mbar 的工况下测出的，允差 ± 10%，吸入空气和环境温度不超过 25℃ 时，仍可达到图示总压差。

The performance curves are valid for pumping air at 15°C at the inlet flanges with an air pressure of 1013 mbar and atolerance of ± 10%.The total pressure differences are valid up to an intake and ambient temperatruue of 25°C .



2GH3





# 气环风机的选型和订购参数

Side channel blower selection and ordering parameters

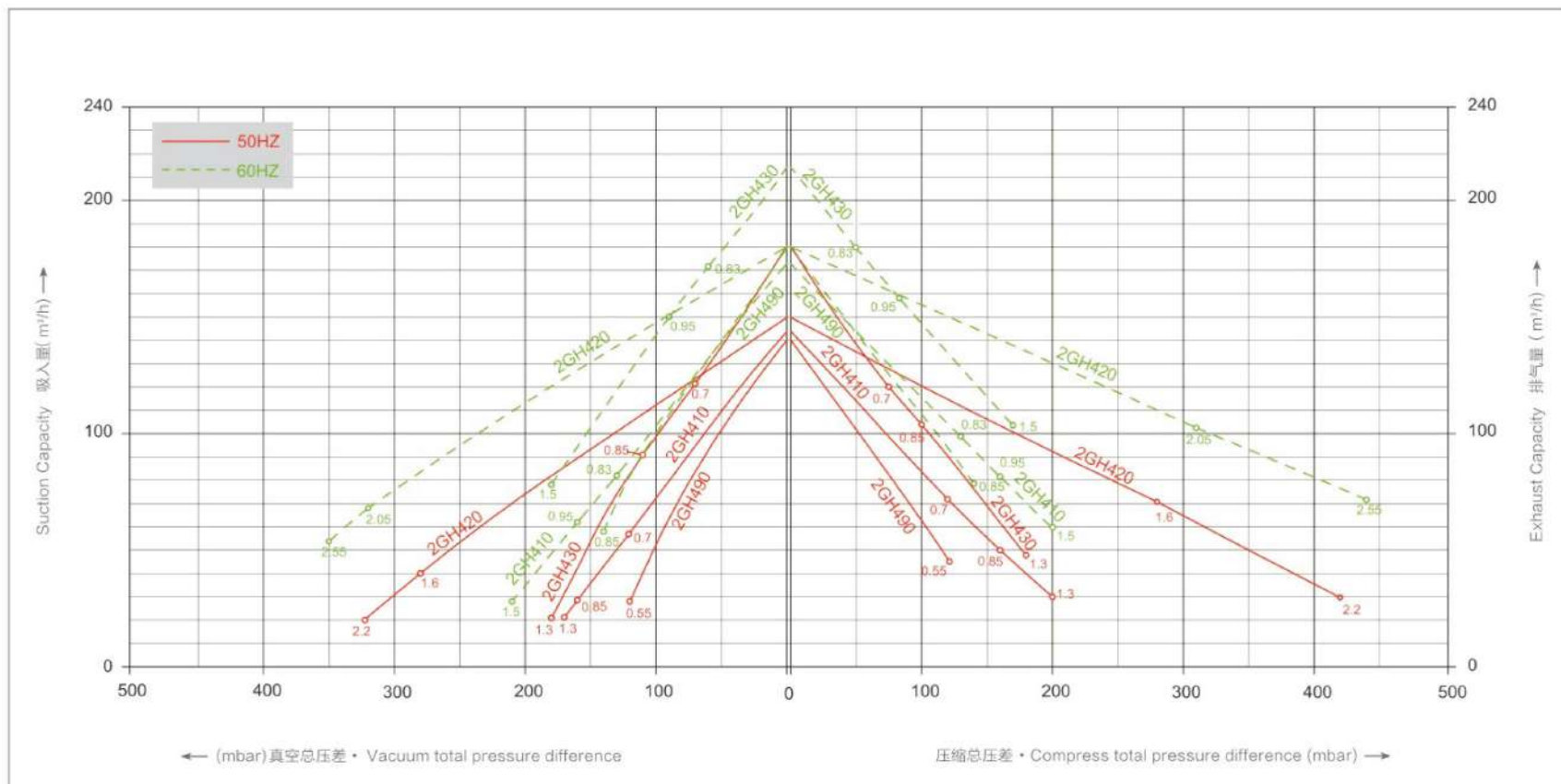
订购型号	电机				重量	噪音	最大流量	最高真空	最高压力	卸压阀
	频率	额定								数目 × 型号
		输出功率	电压	电流						
Order No.	MOTOR				weight approx	Sound pressure level	Maximum airflow	Maximum Vacuum	Maximum pressure	Pressure relief valve
	Frequency	Rated								Number × type
		output	voltage	current						
	HZ	KW	V	A	KG	dB(A)	m <sup>3</sup> /h	mbar	mbar	
2GH 410-H06	50	0.7	200-240 Δ /345-415Y	3.07 Δ /1.77Y	13	63	145	-120	120	1 x 2BX2 110/...141
	60	0.83	220-275 Δ /380-480Y	4.16 Δ /2.4Y		64	175	-130	130	1 x 2BX2 114/...142
2GH 410-H16	50	0.85	200-240 Δ /345-415Y	3.29 Δ /1.9Y	16	63	145	-160	160	1 x 2BX2 110/...141
	60	0.95	220-275 Δ /380-480Y	3.67 Δ /2.12Y		64	175	-160	160	1 x 2BX2 114/...142
2GH 410-H26	50	1.3	200-240 Δ /345-415Y	5.02 Δ /2.9Y	17	63	145	-170	200	1 x 2BX2 110/...141
	60	1.5	220-275 Δ /380-480Y	5.89 Δ /3.4Y		64	175	-210	220	1 x 2BX2 114/...142
2GH 420-H36	50	1.6	200-240 Δ /345-415Y	6.24 Δ /3.6Y	25	66	150	-280	280	1 x 2BX2 110/...141
	60	2.05	220-275 Δ /380-480Y	7.97 Δ /4.6Y		69	180	-320	310	1 x 2BX2 114/...142
2GH 420-H46	50	2.2	200-240 Δ /345-415Y	8.14 Δ /4.7Y	27	66	150	-320	420	1 x 2BX2 110/...141
	60	2.55	220-275 Δ /380-480Y	9.21 Δ /5.32Y		69	180	-350	440	1 x 2BX2 114/...142
2GH 430-H06	50	0.7	200-240 Δ /345-415Y	3.07 Δ /1.77Y	14	64	180	-70	70	1 x 2BX2 110/...141
	60	0.83	220-275 Δ /380-480Y	4.16 Δ /2.4Y		65	210	-60	50	2 x 2BX2 114/...142
2GH 430-H16	50	0.85	200-240 Δ /345-415Y	3.29 Δ /1.9Y	17	64	180	-110	100	1 x 2BX2 110/...141
	60	0.95	220-275 Δ /380-480Y	3.67 Δ /2.12Y		65	210	-90	80	2 x 2BX2 114/...142
2GH 430-H26	50	1.3	200-240 Δ /345-415Y	5.02 Δ /2.9Y	18	64	180	-180	180	1 x 2BX2 110/...141
	60	1.5	220-275 Δ /380-480Y	5.89 Δ /3.4Y		65	210	-180	170	1 x 2BX2 114/...142
2GH 490-H16	50	0.55	200-240 Δ /345-415Y	2.5 Δ /1.4Y	14	63	140	-120	120	—
	60	0.75	220-275 Δ /380-480Y	2.7 Δ /1.6Y		64	175	-140	140	—

# 技术参数图表

## Technical Parameters

下面的性能曲线是在抽吸 15°C 空气，排气压力 1013mbar 的工况下测出的，允差 ± 10%，吸入空气和环境温度不超过 25°C 时，仍可达到图示总压差。

The performance curves are valid for pumping air at 15°C at the inlet flanges with an air pressure of 1013 mbar and atolerance of ±10%.The total pressure differences are valid up to an intake and ambient tempratue of 25°C .





# 气环风机的选型和订购参数

Side channel blower selection and ordering parameters

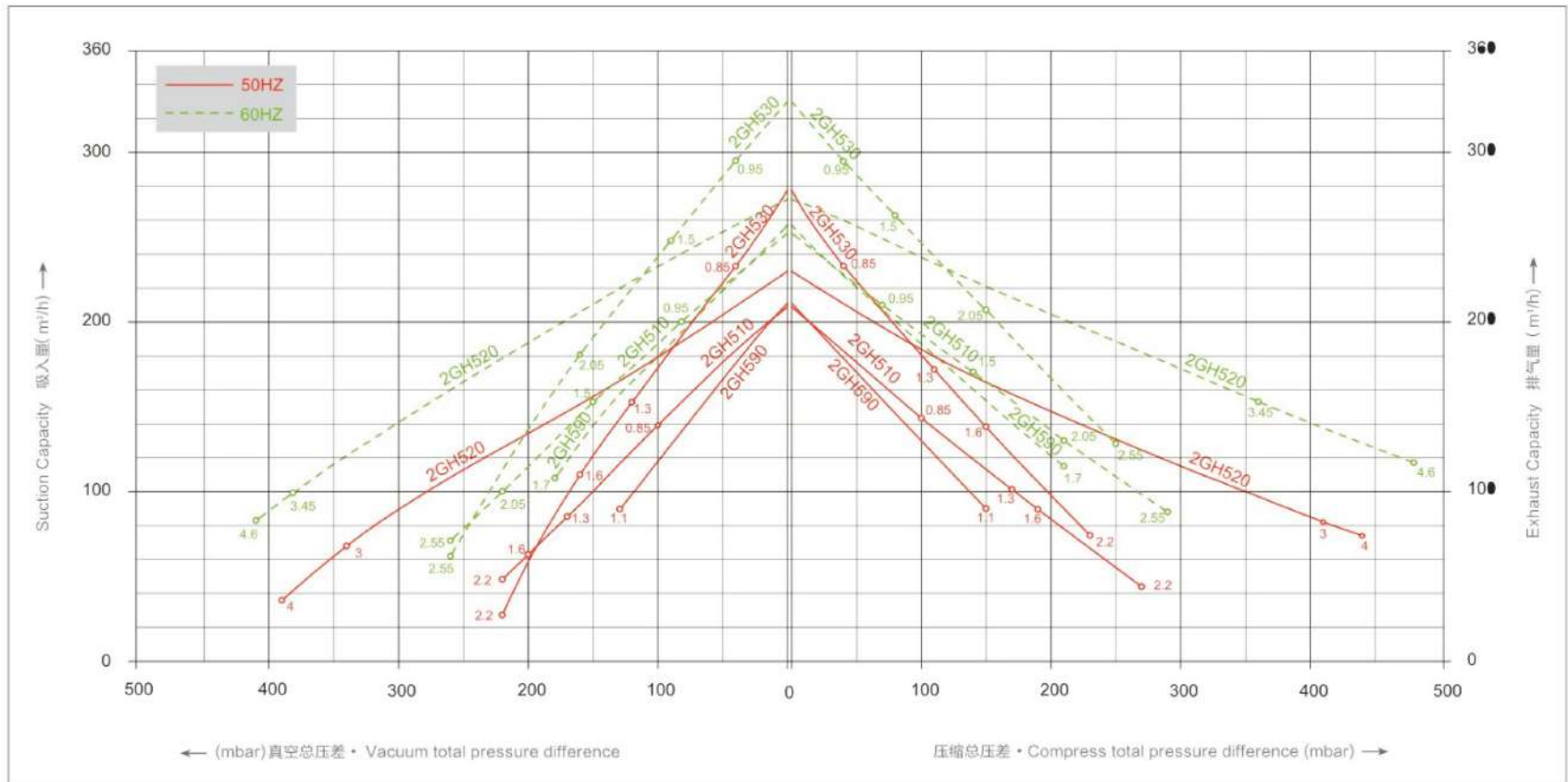
订购型号	电机				重量	噪音	最大流量	最高真空	最高压力	卸压阀
	频率	额定								数目 × 型号
		输出功率	电压	电流						
Order No.	MOTOR				weight approx	Sound pressure level	Maximum airflow	Maximum Vacuum	Maximum pressure	Pressure relief valve
	Frequency	Rated								Number × type
		output	voltage	current						
	HZ	KW	V	A	KG	dB(A)	m <sup>3</sup> /h	mbar	mbar	
2GH 510-H06	50	0.85	200-240 Δ /345-415Y	3.29 Δ /1.9Y	20	64	210	-160	170	1 x 2BX2 110/....145
	60	0.95	220-275 Δ /380-480Y	3.67 Δ /2.12Y		70	255	-150	160	1 x 2BX2 114/....146
2GH 510-H16	50	1.3	200-240 Δ /345-415Y	5.02 Δ /2.9Y	22	64	210	-170	170	1 x 2BX2 110/....145
	60	1.5	220-275 Δ /380-480Y	5.89 Δ /3.4Y		70	255	-150	140	1 x 2BX2 114/....146
2GH 510-H26	50	1.6	200-240 Δ /345-415Y	6.24 Δ /3.6Y	23	64	210	-200	190	1 x 2BX2 110/....145
	60	2.05	220-275 Δ /380-480Y	7.97 Δ /4.6Y		70	255	-220	210	1 x 2BX2 114/....146
2GH 510-H36	50	2.2	200-240 Δ /345-415Y	8.14 Δ /4.7Y	25	64	210	-220	270	1 x 2BX2 110/....145
	60	2.55	220-275 Δ /380-480Y	9.21 Δ /5.32Y		70	255	-260	290	1 x 2BX2 114/....146
2GH 520-H46	50	3.0	200-240 Δ /345-415Y	10.46 Δ /6.04Y	40	72	230	-340	410	1 x 2BX2 110/....145
	60	3.45	220-275 Δ /380-480Y	12.04 Δ /6.95Y		74	275	-380	360	1 x 2BX2 114/....146
2GH 520-H57	50	4.0	345-415 Δ /600-720Y	8.05 Δ /4.65Y	41	72	230	-390	440	1 x 2BX2 110/....145
	60	4.6	380-480 Δ /660-720Y	9.26 Δ /5.35Y		74	275	-410	480	1 x 2BX2 114/....146
2GH 530-H06	50	0.85	200-240 Δ /345-415Y	3.29 Δ /1.9Y	21	65	270	-40	40	1 x 2BX2 110/....145
	60	0.95	220-275 Δ /380-480Y	3.67 Δ /2.12Y		71	330	-40	40	1 x 2BX2 114/....146
2GH 530-H16	50	1.3	200-240 Δ /345-415Y	5.02 Δ /2.9Y	23	65	270	-120	110	1 x 2BX2 110/....145
	60	1.5	220-275 Δ /380-480Y	5.89 Δ /3.4Y		71	330	-90	80	1 x 2BX2 114/....146
2GH 530-H26	50	1.6	200-240 Δ /345-415Y	6.24 Δ /3.6Y	24	65	270	-160	150	1 x 2BX2 110/....145
	60	2.05	220-275 Δ /380-480Y	7.97 Δ /4.6Y		71	330	-160	150	1 x 2BX2 114/....146
2GH 530-H36	50	2.2	200-240 Δ /345-415Y	8.14 Δ /4.7Y	26	65	270	-220	230	1 x 2BX2 110/....145
	60	2.55	220-275 Δ /380-480Y	9.21 Δ /5.32Y		71	330	-260	250	1 x 2BX2 114/....146
2GH 590-H26	50	1.1	200-240 Δ /345-415Y	5.7 Δ /3.3Y	23	64	210	-130	150	—
	60	1.7	220-275 Δ /380-480Y	6.0 Δ /3.5Y		70	255	-180	210	—

# 技术参数图表

## Technical Parameters

下面的性能曲线是在抽吸 15°C 空气，排气压力 1013mbar 的工况下测出的，允差 ± 10%，吸入空气和环境温度不超过 25°C 时，仍可达到图示总压差。

The performance curves are valid for pumping air at 15°C at the inlet flanges with an air pressure of 1013 mbar and atolerance of ±10%. The total pressure differences are valid up to an intake and ambient temperature of 25°C.





# 气环风机的选型和订购参数

Side channel blower selection and ordering parameters

订购型号	电机				重量	噪音	最大流量	最高真空	最高压力	卸压阀
	频率	额定								数目 × 型号
		输出功率	电压	电流						
Order No.	MOTOR				weight approx	Sound pressure level	Maximum airflow	Maximum Vacuum	Maximum pressure	Pressure relief valve
	Frequency	Rated								Number × type
		output	voltage	current						
	HZ	KW	V	A	KG	dB(A)	m <sup>3</sup> /h	mbar	mbar	
2GH 610-H06	50	1.6	200-240 Δ /345-415Y	6.24 Δ /3.6Y	25	68	265	-170	180	1 x 2BX2 110/....145
	60	2.05	220-275 Δ /380-480Y	7.97 Δ /4.6Y		70	315	-180	190	1 x 2BX2 114/....146
2GH 610-H16	50	2.2	200-240 Δ /345-415Y	8.14 Δ /4.7Y	28	69	265	-235	220	1 x 2BX2 110/....145
	60	2.55	220-275 Δ /380-480Y	9.21 Δ /5.32Y		72	315	-245	230	1 x 2BX2 114/....146
2GH 610-H26	50	3.0	200-240 Δ /345-415Y	10.46 Δ /6.04Y	34	69	265	-280	280	1 x 2BX2 110/....145
	60	3.45	220-275 Δ /380-480Y	12.04 Δ /6.95Y		72	315	-260	270	1 x 2BX2 114/....146
2GH 630-H06	50	1.6	200-240 Δ /345-415Y	6.24 Δ /3.6Y	26	70	345	-125	125	1 x 2BX2 110/....145
	60	2.05	220-275 Δ /380-480Y	7.97 Δ /4.6Y		73	415	-105	130	1 x 2BX2 114/....146
2GH 630-H16	50	2.2	200-240 Δ /345-415Y	8.14 Δ /4.7Y	29	70	345	-200	195	1 x 2BX2 110/....145
	60	2.55	220-275 Δ /380-480Y	9.21 Δ /5.32Y		73	415	-170	195	1 x 2BX2 114/....146
2GH 630-H26	50	3.0	200-240 Δ /345-415Y	10.46 Δ /6.04Y	35	70	345	-240	220	1 x 2BX2 110/....145
	60	3.45	220-275 Δ /380-480Y	12.04 Δ /6.95Y		73	415	-210	220	1 x 2BX2 114/....146

# 技术参数图表

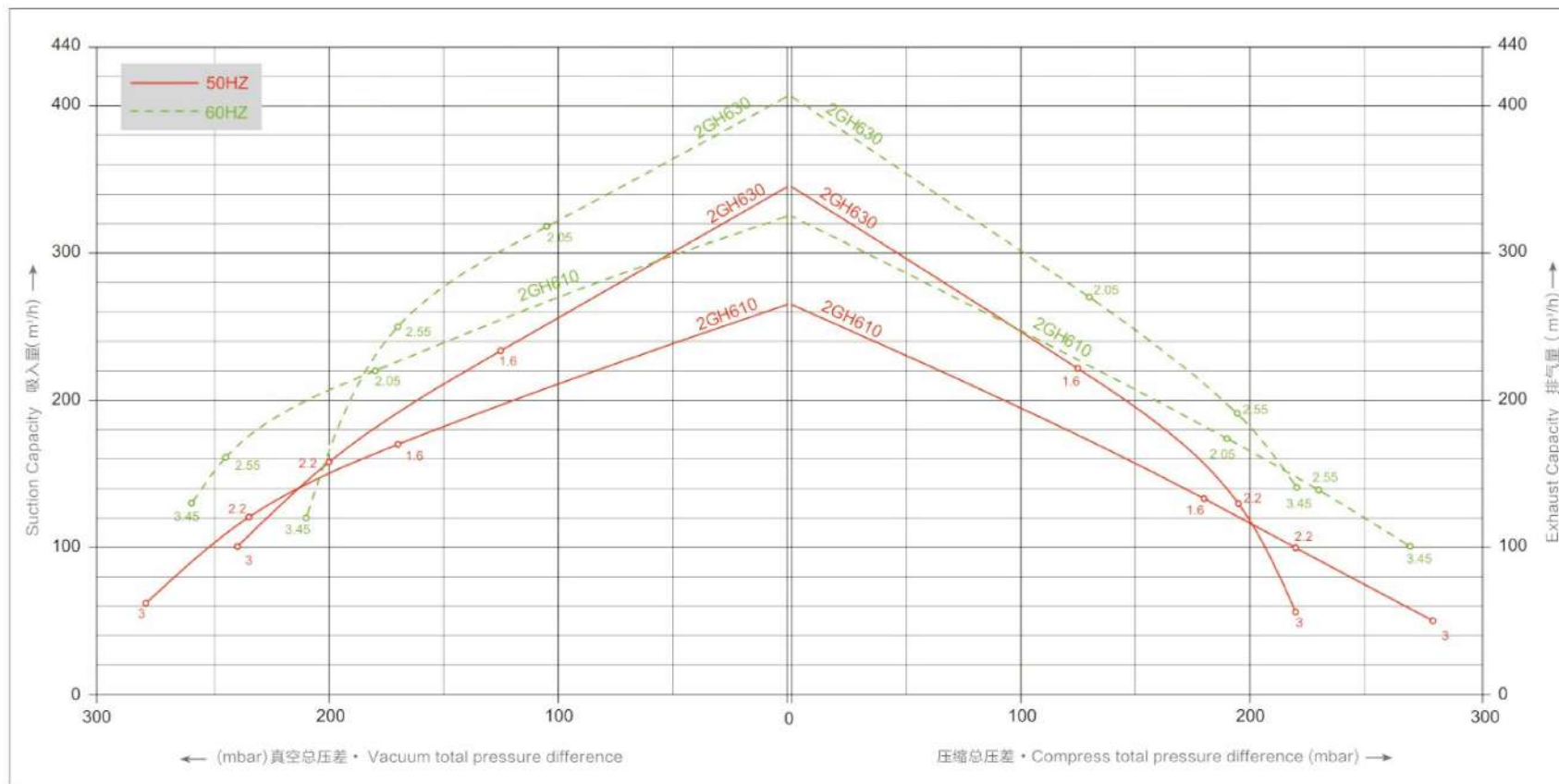
## Technical Parameters

下面的性能曲线是在抽吸 15℃ 空气，排气压力 1013mbar 的工况下测出的，允差 ± 10%，吸入空气和环境温度不超过 25℃ 时，仍可达到图示总压差。

The performance curves are valid for pumping air at 15℃ at the inlet flanges with an air pressure of 1013 mbar and atolerance of ±10%.The total pressure differences are valid up to an intake and ambient temprue of 25℃ .



2GH6





# 气环风机的选型和订购参数

Side channel blower selection and ordering parameters

订购型号	电机				重量	噪音	最大流量	最高真空	最高压力	卸压阀
	频率	额定								数目 × 型号
输出功率		电压	电流	MOTOR	weight approx	Sound pressure level	Maximum airflow	Maximum Vacuum	Maximum pressure	
Order No.	Frequency	Rated			KG	dB(A)	m <sup>3</sup> /h	mbar	mbar	Number × type
	output	voltage	current							
	HZ	KW	V	A						
2GH 710-H06	50	1.6	200-240 Δ /345-415Y	6.24 Δ /3.6Y	27	69	318	-160	150	1 x 2BX2 110/...145
	60	2.05	220-275 Δ /380-480Y	7.97 Δ /4.6Y		72	376	-160	150	1 x 2BX2 114/...146
2GH 710-H16	50	2.2	200-240 Δ /345-415Y	8.14 Δ /4.7Y	30	69	318	-190	190	1 x 2BX2 110/...145
	60	2.55	220-275 Δ /380-480Y	9.21 Δ /5.32Y		72	376	-190	190	1 x 2BX2 114/...146
2GH 710-H26	50	3.0	200-240 Δ /345-415Y	10.46 Δ /6.04Y	36	69	318	-260	270	1 x 2BX2 110/...145
	60	3.45	220-275 Δ /380-480Y	12.04 Δ /6.95Y		72	376	-240	230	1 x 2BX2 114/...146
2GH 710-H37	50	4.0	345-415 Δ /600-720Y	8.05 Δ /4.65Y	40	69	318	-290	360	1 x 2BX2 110/...145
	60	4.6	380-480 Δ /660-720Y	9.26 Δ /5.35Y		72	376	-320	310	1 x 2BX2 114/...146
2GH 720-H16	50	2.2	200-240 Δ /345-415Y	8.14 Δ /4.7Y	43	73	320	-200	190	1 x 2BX2 110/...145
	60	2.55	220-275 Δ /380-480Y	9.21 Δ /5.32Y		76	380	-170	150	2 x 2BX2 114/...146
2GH 720-H26	50	3.0	200-240 Δ /345-415Y	10.46 Δ /6.04Y	48	73	320	-250	250	1 x 2BX2 110/...145
	60	3.45	220-275 Δ /380-480Y	12.04 Δ /6.95Y		76	380	-210	180	2 x 2BX2 114/...146
2GH 720-H37	50	4.3	345-415 Δ /600-720Y	10.0 Δ /5.2Y	54	73	320	-360	360	1 x 2BX2 110/...145
	60	4.8	380-480 Δ /660-720Y	10.4 Δ /6.0Y		76	380	-330	330	1 x 2BX2 114/...146
2GH 720-H47	50	5.5	345-415 Δ /600-720Y	10.7 Δ /6.18Y	66	73	320	-420	500	1 x 2BX2 110/...145
	60	6.3	380-480 Δ /660-720Y	12.3 Δ /7.1Y		76	380	-440	440	1 x 2BX2 114/...146
2GH 720-H57	50	7.5	345-415 Δ /600-720Y	14.3 Δ /8.26Y	73	73	320	-420	610	1 x 2BX2 110/...145
	60	8.6	380-480 Δ /660-720Y	16.7 Δ /9.64Y		76	380	-440	670	1 x 2BX2 114/...146
2GH 730-H06	50	1.6	200-240 Δ /345-415Y	6.24 Δ /3.6Y	29	70	420	-100	100	1 x 2BX2 110/...145
	60	2.05	220-275 Δ /380-480Y	7.97 Δ /4.6Y		73	500	-110	100	3 x 2BX2 114/...146
2GH 730-H16	50	2.2	200-240 Δ /345-415Y	8.14 Δ /4.7Y	32	70	420	-180	170	1 x 2BX2 110/...145
	60	2.55	220-275 Δ /380-480Y	9.21 Δ /5.32Y		73	500	-160	150	2 x 2BX2 114/...146
2GH 730-H26	50	3.0	200-240 Δ /345-415Y	10.46 Δ /6.04Y	37	70	420	-220	200	1 x 2BX2 110/...145
	60	3.45	220-275 Δ /380-480Y	12.04 Δ /6.95Y		73	500	-200	180	2 x 2BX2 114/...146
2GH 730-H37	50	4.0	345-415 Δ /600-720Y	8.05 Δ /4.65Y	43	70	420	-260	290	1 x 2BX2 110/...145
	60	4.6	380-480 Δ /660-720Y	9.26 Δ /5.35Y		73	500	-260	260	2 x 2BX2 114/...146
2GH 740-H37	50	4.0	345-415 Δ /600-720Y	8.05 Δ /4.65Y	54	74	500	-150	140	1 x 2BX2 110/...145
	60	4.6	380-480 Δ /660-720Y	9.26 Δ /5.35Y		78	600	-100	90	2 x 2BX2 114/...146
2GH 740-H47	50	5.5	345-415 Δ /600-720Y	10.7 Δ /6.18Y	69	74	500	-240	260	1 x 2BX2 110/...145
	60	6.3	380-480 Δ /660-720Y	12.3 Δ /7.1Y		78	600	-210	200	2 x 2BX2 114/...146
2GH 740-H57	50	7.5	345-415 Δ /600-720Y	14.3 Δ /8.26Y	75	74	500	-240	320	1 x 2BX2 110/...145
	60	8.6	380-480 Δ /660-720Y	16.7 Δ /9.64Y		78	600	-270	300	1 x 2BX2 114/...146
2GH 790-H26	50	3.0	200-240 Δ /345-415Y	10.46 Δ /6.04Y	36	69	320	-160	200	—
	60	3.45	220-275 Δ /380-480Y	12.04 Δ /6.95Y		72	370	-240	250	—

# 技术参数图表

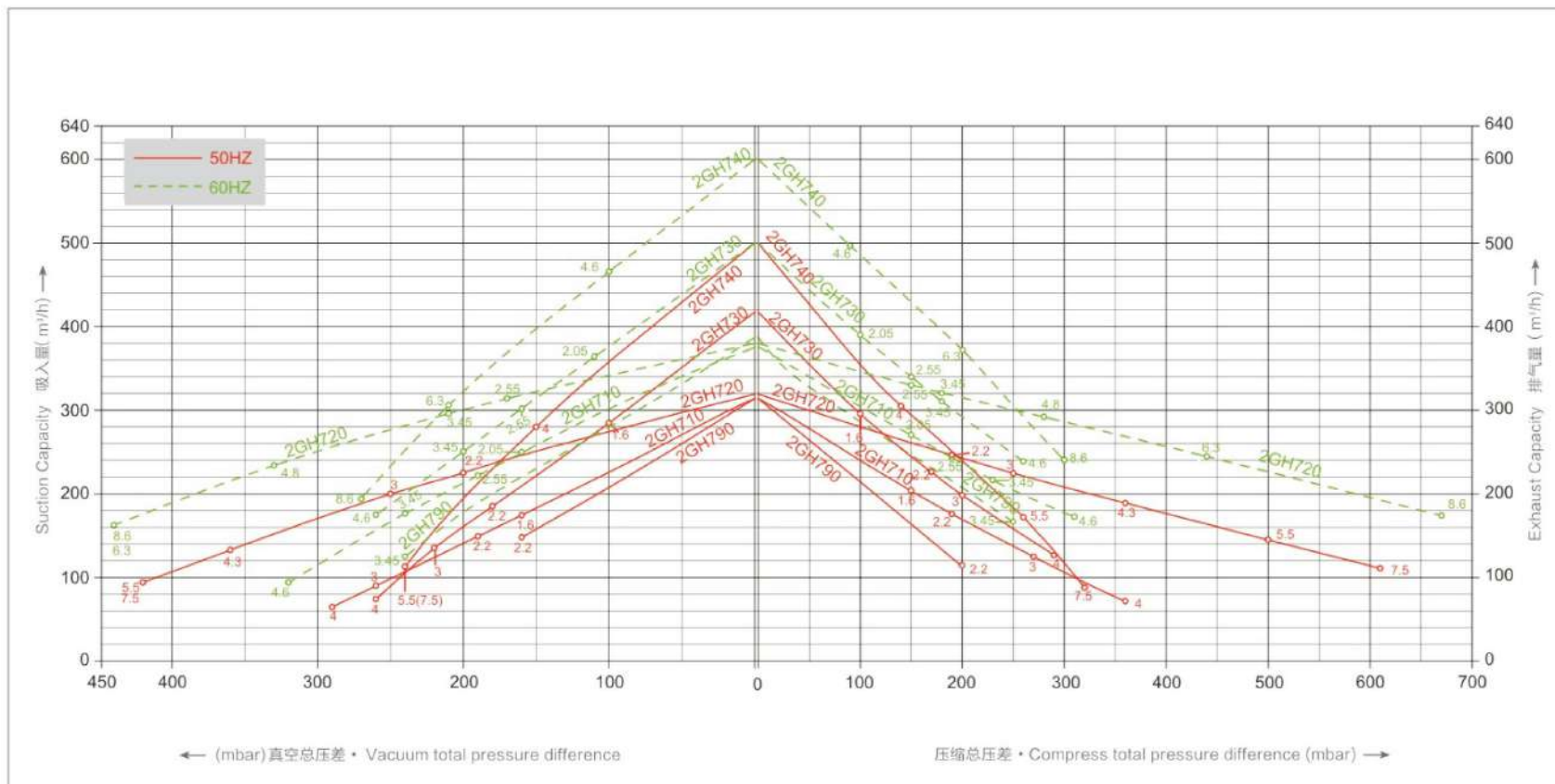
## Technical Parameters

下面的性能曲线是在抽吸 15°C 空气，排气压力 1013mbar 的工况下测出的，允差 ± 10%，吸入空气和环境温度不超过 25°C 时，仍可达到图示总压差。

The performance curves are valid for pumping air at 15°C at the inlet flanges with an air pressure of 1013 mbar and atolerance of ± 10%.The total pressure differences are valid up to an intake and ambient temperatruue of 25°C .



2GH7





# 气环风机的选型和订购参数

Side channel blower selection and ordering parameters

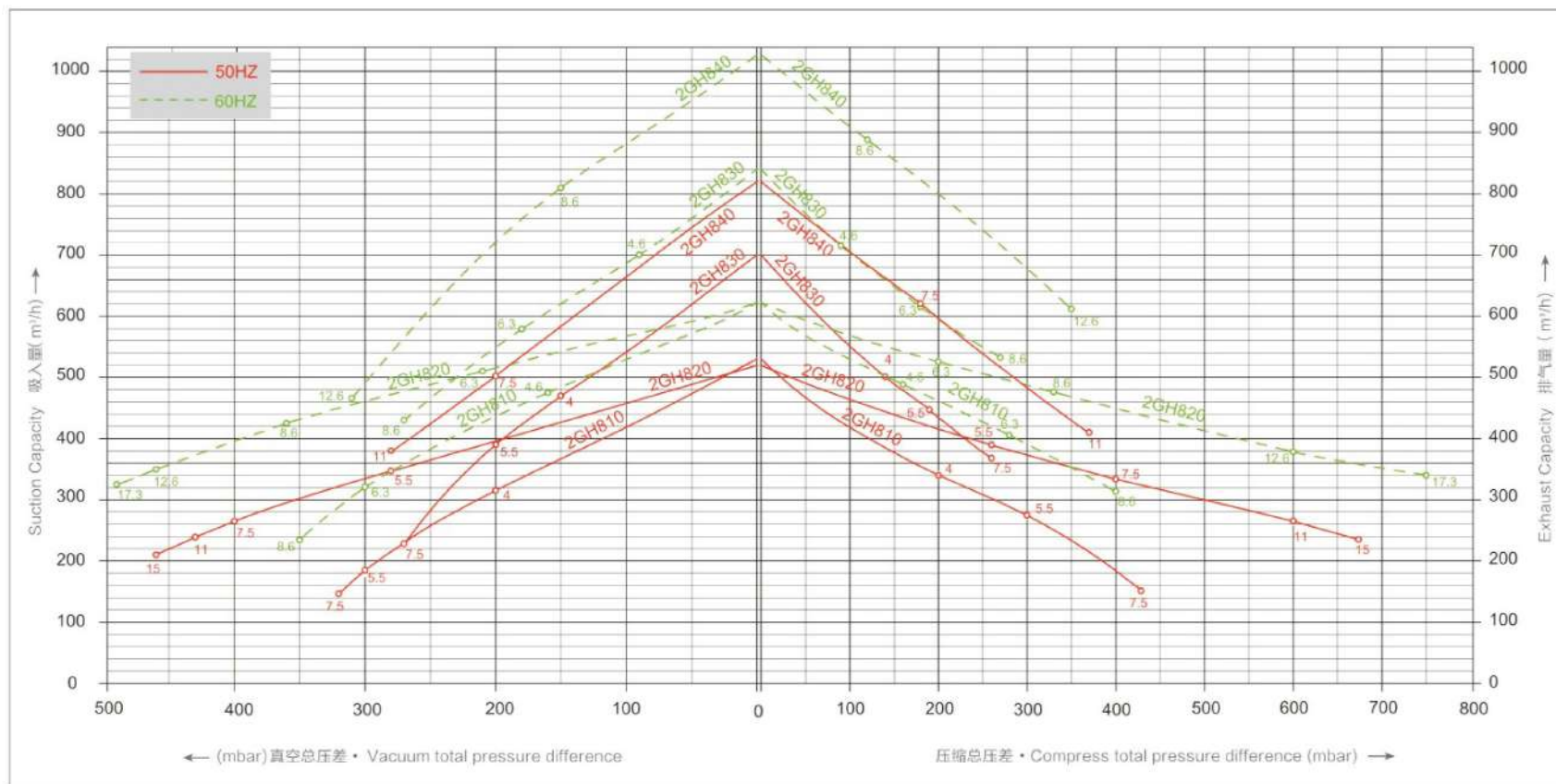
订购型号	电机				重量	噪音	最大流量	最高真空	最高压力	卸压阀
	频率	额定								数目 × 型号
		输出功率	电压	电流						
Order No.	MOTOR				weight approx	Sound pressure level	Maximum airflow	Maximum Vacuum	Maximum pressure	Pressure relief valve
	Frequency	Rated								Number × type
	HZ	output	voltage	current	KG	dB(A)	m <sup>3</sup> /h	mbar	mbar	
		KW	V	A						
2GH 810-H07	50	4.0	345-415 Δ /600-720Y	8.05 Δ /4.65Y	54	70	530	-200	200	1 × 2BX4 740/...840
	60	4.6	380-480 Δ /660-720Y	9.26 Δ /5.35Y		74	620	-160	160	1 × 2BX4 744/...844
2GH 810-H17	50	5.5	345-415 Δ /600-720Y	10.7 Δ /6.18Y	63	70	530	-300	300	1 × 2BX4 740/...840
	60	6.3	380-480 Δ /660-720Y	12.3 Δ /7.1Y		74	620	-300	280	1 × 2BX4 744/...844
2GH 810-H27	50	7.5	345-415 Δ /600-720Y	14.3 Δ /8.26Y	66	70	530	-320	430	1 × 2BX4 740/...840
	60	8.6	380-480 Δ /660-720Y	16.7 Δ /9.64Y		74	620	-350	400	1 × 2BX4 744/...844
2GH 820-H17	50	5.5	345-415 Δ /600-720Y	10.7 Δ /6.18Y	83	74	520	-280	260	1 × 2BX4 740/...840
	60	6.3	380-480 Δ /660-720Y	12.3 Δ /7.1Y		78	620	-210	200	1 × 2BX4 744/...844
2GH 820-H27	50	7.5	345-415 Δ /600-720Y	14.3 Δ /8.26Y	86	74	520	-400	400	1 × 2BX4 740/...840
	60	8.6	380-480 Δ /660-720Y	16.7 Δ /9.64Y		78	620	-360	330	1 × 2BX4 744/...844
2GH 820-H37	50	11.0	345-415 Δ /600-720Y	20.8 Δ /12.1Y	104	74	520	-430	600	1 × 2BX4 740/...840
	60	12.6	380-480 Δ /660-720Y	23.8 Δ /13.74Y		78	620	-460	600	1 × 2BX4 744/...844
2GH 820-H47	50	15.0	345-415 Δ /600-720Y	28.3 Δ /16.34Y	120	74	520	-460	670	1 × 2BX4 740/...840
	60	17.3	380-480 Δ /660-720Y	33.1 Δ /19.1Y		78	620	-490	750	1 × 2BX4 744/...844
2GH 830-H07	50	4.0	345-415 Δ /600-720Y	8.05 Δ /4.65Y	57	70	700	-150	140	1 × 2BX4 740/...840
	60	4.6	380-480 Δ /660-720Y	9.26 Δ /5.35Y		74	840	-90	90	1 × 2BX4 744/...844
2GH 830-H17	50	5.5	345-415 Δ /600-720Y	10.7 Δ /6.18Y	66	70	700	-200	190	1 × 2BX4 740/...840
	60	6.3	380-480 Δ /660-720Y	12.3 Δ /7.1Y		74	840	-180	180	1 × 2BX4 744/...844
2GH 830-H27	50	7.5	345-415 Δ /600-720Y	14.3 Δ /8.26Y	69	70	700	-270	260	1 × 2BX4 740/...840
	60	8.6	380-480 Δ /660-720Y	16.7 Δ /9.64Y		74	840	-270	260	1 × 2BX4 744/...844
2GH 840-H27	50	7.5	345-415 Δ /600-720Y	14.3 Δ /8.26Y	91	74	900	-200	180	1 × 2BX4 740/...840
	60	8.6	380-480 Δ /660-720Y	16.7 Δ /9.64Y		78	1080	-150	120	1 × 2BX4 744/...844
2GH 840-H37	50	11.0	345-415 Δ /600-720Y	20.8 Δ /12.1Y	110	74	900	-280	370	1 × 2BX4 740/...840
	60	12.6	380-480 Δ /660-720Y	23.8 Δ /13.74Y		78	1050	-310	350	1 × 2BX4 744/...844

# 技术参数图表

## Technical Parameters

下面的性能曲线是在抽吸 15℃ 空气，排气压力 1013mbar 的工况下测出的，允差 ± 10%，吸入空气和环境温度不超过 25℃ 时，仍可达到图示总压差。

The performance curves are valid for pumping air at 15°C at the inlet flanges with an air pressure of 1013 mbar and tolerance of ± 10%. The total pressure differences are valid up to an intake and ambient temperature of 25°C.





# 气环风机的选型和订购参数

Side channel blower selection and ordering parameters

订购型号	电机				重量	噪音	最大流量	最高真空	最高压力	卸压阀
	频率	额定								数目 × 型号
		输出功率	电压	电流						
Order No.	MOTOR				weight approx	Sound pressure level	Maximum airflow	Maximum Vacuum	Maximum pressure	Pressure relief valve
	Frequency	Rated								Number × type
		output	voltage	current						
	HZ	KW	V	A	KG	dB(A)	m <sup>3</sup> /h	mbar	mbar	
2GH 910-H07	50	8.5	345-415 Δ /600-720Y	16.5 Δ /9.53Y	93	74	1050	-190	190	1 x 2BX4 750/...860
	60	9.8	380-480 Δ /660-720Y	19.1 Δ /11.03Y		79	1250	-150	140	1 x 2BX4 754/...864
2GH 910-H17	50	12.5	345-415 Δ /600-720Y	23.6 Δ /13.63Y	116	74	1050	-290	280	1 x 2BX4 750/...860
	60	14.5	380-480 Δ /660-720Y	27.4 Δ /15.82Y		79	1250	-270	260	1 x 2BX4 754/...864
2GH 910-H37	50	18.5	345-415 Δ /600-720Y	34.9 Δ /20.15Y	126	74	1050	-360	460	1 x 2BX4 750/...860
	60	21.3	380-480 Δ /660-720Y	40.2 Δ /23.21Y		79	1250	-380	420	1 x 2BX4 754/...864
2GH 920-H17	50	12.5	345-415 Δ /600-720Y	23.6 Δ /13.63Y	187	74	1110	-300	270	1 x 2BX4 750/...860
	60	14.5	380-480 Δ /660-720Y	27.4 Δ /15.82Y		78	1310	-220	200	1 x 2BX4 754/...864
2GH 920-H27	50	16.5	345-415 Δ /600-720Y	27.4 Δ /15.82Y	197	74	1110	-410	370	1 x 2BX4 750/...860
	60	19.0	380-480 Δ /660-720Y	31.1 Δ /17.96Y		78	1320	-340	300	1 x 2BX4 754/...864
2GH 920-H37	50	20.0	345-415 Δ /600-720Y	37.8 Δ /21.82Y	204	74	1110	-440	500	1 x 2BX4 750/...860
	60	23.0	380-480 Δ /660-720Y	44.4 Δ /25.64Y		78	1310	-440	430	1 x 2BX4 754/...864
2GH 920-H47	50	25.0	345-415 Δ /600-720Y	47.1 Δ /27.19Y	211	74	1110	-440	590	1 x 2BX4 750/...860
	60	29.0	380-480 Δ /660-720Y	54.7 Δ /31.58Y		78	1310	-440	540	1 x 2BX4 754/...864
2GH 930-H07	50	8.5	345-415 Δ /600-720Y	16.5 Δ /9.53Y	98	75	1370	-120	110	2 x 2BX4 750/...880
	60	9.8	380-480 Δ /660-720Y	19.1 Δ /11.03Y		80	1650	-80	70	2 x 2BX4 754/...864
2GH 930-H17	50	12.5	345-415 Δ /600-720Y	23.6 Δ /13.63Y	121	75	1370	-190	180	1 x 2BX4 750/...880
	60	14.5	380-480 Δ /660-720Y	27.4 Δ /15.82Y		80	1650	-150	150	1 x 2BX4 754/...864
2GH 930-H27	50	15.0	345-415 Δ /600-720Y	28.3 Δ /16.34Y	128	75	1370	-250	260	1 x 2BX4 750/...860
	60	17.5	380-480 Δ /660-720Y	33.1 Δ /19.1Y		80	1650	-210	220	1 x 2BX4 754/...864
2GH 930-H37	50	18.5	345-415 Δ /600-720Y	34.9 Δ /20.15Y	131	75	1370	-320	340	1 x 2BX4 750/...860
	60	21.3	380-480 Δ /660-720Y	40.2 Δ /23.21Y		80	1650	-320	300	1 x 2BX4 754/...864
2GH 940-H27	50	15.0	345-415 Δ /600-720Y	28.3 Δ /16.34Y	187	75	1940	-130	110	2 x 2BX4 750/...880
	60	17.5	380-480 Δ /660-720Y	33.1 Δ /19.1Y		84	2310	-60	40	2 x 2BX4 754/...884
2GH 940-H37	50	20.0	345-415 Δ /600-720Y	37.8 Δ /21.82Y	212	75	1940	-220	200	2 x 2BX4 750/...880
	60	23.0	380-480 Δ /660-720Y	44.4 Δ /25.64Y		84	2310	-160	130	2 x 2BX4 754/...884
2GH 940-H47	50	25.0	345-415 Δ /600-720Y	47.1 Δ /27.19Y	219	75	1940	-310	280	1 x 2BX4 750/...860
	60	29.0	380-480 Δ /660-720Y	54.7 Δ /31.58Y		84	2310	-270	220	1 x 2BX4 754/...884
2GH 943-H27 <sup>1)</sup>	50	15.0	345-415 Δ /600-720Y	28.3 Δ /16.34Y	220	75	2050	-160	170	2 x 2BX4 750/...870
	60	17.5	380-480 Δ /660-720Y	33.1 Δ /19.1Y		84	2480	-120	110	2 x 2BX4 754/...874
2GH 943-H37 <sup>1)</sup>	50	20.0	345-415 Δ /600-720Y	37.8 Δ /21.82Y	230	75	2050	-250	230	2 x 2BX4 750/...870
	60	23.0	380-480 Δ /660-720Y	44.4 Δ /25.64Y		84	2480	-190	180	2 x 2BX4 754/...874
2GH 943-H47 <sup>1)</sup>	50	25.0	345-415 Δ /600-720Y	47.1 Δ /27.19Y	235	75	2050	-310	280	2 x 2BX4 750/...870
	60	29.0	380-480 Δ /660-720Y	54.7 Δ /31.58Y		84	2480	-270	230	2 x 2BX4 754/...874





**4GH 单级和双级**  
4GH Single and double stage

## 最高压差的巅峰之作

### UNSURPASSED AT HIGHEST DIFFERENTIAL PRESSURE

我们富有革命性的 4GH 压缩机能产生高达 1000 mbar 的压差——远远高于其它任何的气环风机。截止目前，能产生此压差范围的其它系统要比我们的 4GH 体积更庞大，噪音更高，而且容易磨损。现在，除了拥有低噪声、无磨损这些优点外，我们的 4GH 还能在更为苛刻的条件下应用。4GH 气环风机能在不停机维护的条件下连续工作 20000 小时。它们卓越的安全可靠性即便是在最苛刻的工作条件下也得到了证实，虽然它们的低噪音已给人们留下了很深刻的印象，但我们的工程师和设计者们还能使它们变得更加安静。

4GH 选型图表，真空抽吸和压缩模式 50Hz/60Hz      第 27-34 页  
有关 R 系列产品说明等详细信息请参看                      第 49 页

Our revolutionary 4GH blower can create pressure difference of up to 1000 mbar—more than any other gas ring pump. So far, the systems used to reach these differential pressure ranges were much louder and larger—or subject to wear. Now the advantage of wear-free operation coupled with a low noise level can also be used in most demanding applications.

The 4GH series side channel vacuum pump/compressor can work up to 20000 hours without maintenance down time. These specialist machines have proven their reliability under the harshest of conditions.

Their noise level was already impressively low, but our engineers and designers are able to make them even more quiet.

Selection diagrams and tables for 4GH                      Pages 27-34  
Vacuum and pressure mode, 50Hz and 60Hz  
Details on R Series description etc see                      Page 49



# 气环风机的选型和订购参数

Side channel blower selection and ordering parameters

订购型号	电机				重量	噪音	最大流量	最高真空	最高压力	卸压阀
	频率	额定								数目 × 型号
		输出功率	电压	电流						
Order No.	MOTOR				weight approx	Sound pressure level	Maximum airflow	Maximum Vacuum	Maximum pressure	Pressure relief valve
	Frequency	Rated								Number × type
		output	voltage	current						
	HZ	KW	V	A	KG	dB(A)	m³/h	mbar	mbar	
4GH 210-V75	50	0.55	115/230	7.8/3.9	18	57	47	-230	290	1 x 2BX2 110...141
	60	0.63	115/230	8.8.2/4.4		62	57	-260	320	1 x 2BX2 114...142
4GH 220-V75	50	1.5	115/230	118.8/9.4	30	58	47	-370	600	1 x 2BX2 110...141
	60	1.75	115/230	22.0/11.0		62	60	-420	660	1 x 2BX2 114...142
4GH 310-V71	50	0.94	230	5.15	18	57	66	-250	350	1 x 2BX2 110...141
4GH 310-V75	50	0.94	115/230	10.3/5.15	18	57	66	-250	350	1 x 2BX2 110...141
	60	1.1	115/230	14/7		62	80	-280	390	1 x 2BX2 114...142
4GH 320-V75	50	1.5	115/230	18.8/9.4	32	59	65	-400	550	1 x 2BX2 110...141
	60	1.75	115/230	22.0/11.0		63	76	-390	540	1 x 2BX2 114...142
4GH 410-A41	50	1.1	230	7.0	23	58	87	-300	380	1 x 2BX2 110...141
	60	1.3	230	8.4	23	63	105	-350	390	1 x 2BX2 114...142

# 技术参数图表

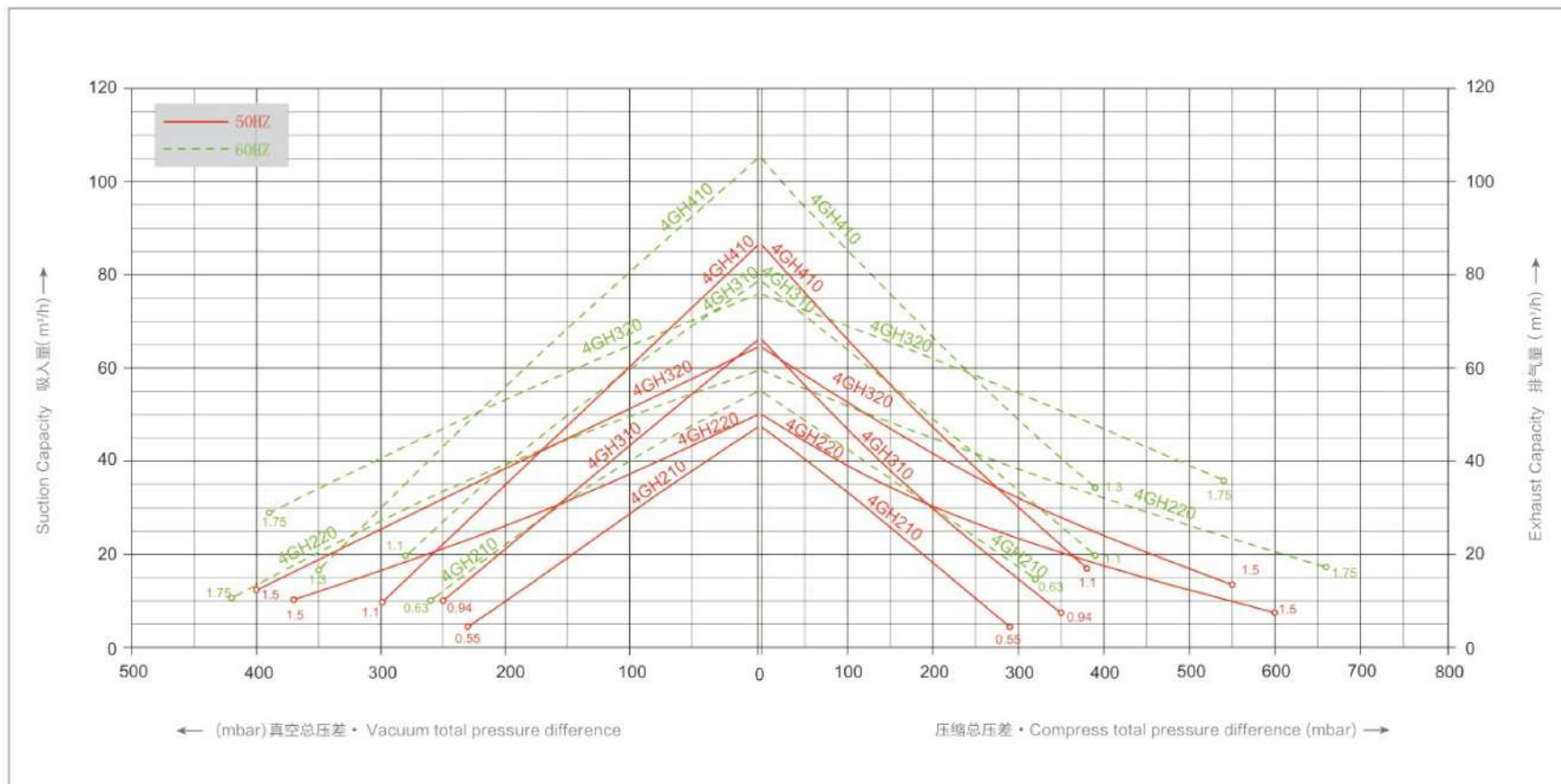
## Technical Parameters

下面的性能曲线是在抽吸 15℃ 空气，排气压力 1013mbar 的工况下测出的，允差 ±10%，吸入空气和环境温度不超过 25℃ 时，仍可达到图示总压差。

The performance curves are valid for pumping air at 15℃ at the inlet flanges with an air pressure of 1013 mbar and atolerance of ±10%.The total pressure differences are valid up to an intake and ambient tempruue of 25℃ .



4GH





# 气环风机的选型和订购参数

Side channel blower selection and ordering parameters

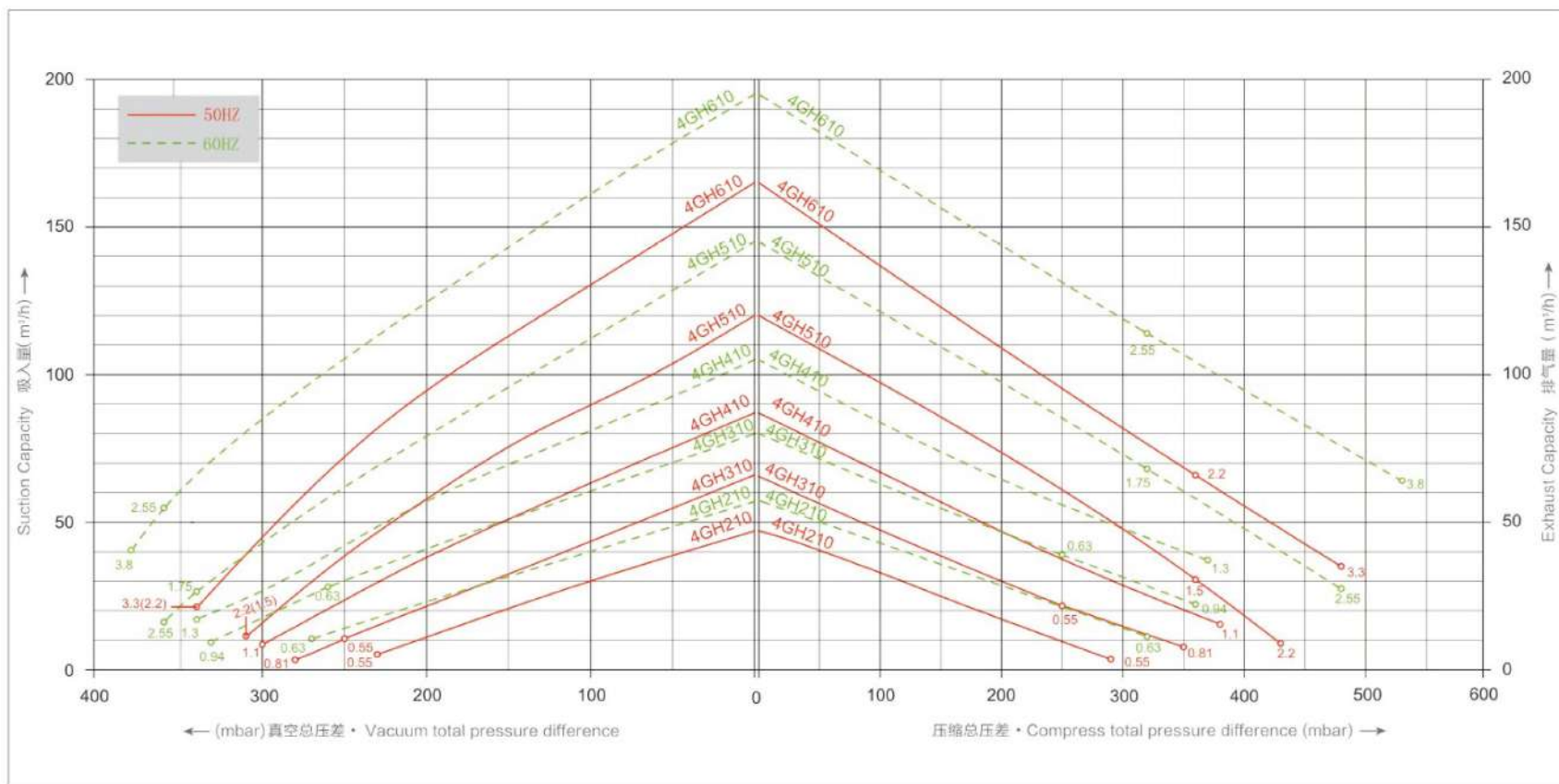
订购型号	电机				重量	噪音	最大流量	最高真空	最高压力	卸压阀
	频率	额定								数目 × 型号
		输出功率	电压	电流						
Order No.	MOTOR				weight approx	Sound pressure level	Maximum airflow	Maximum Vacuum	Maximum pressure	Pressure relief valve
	Frequency	Rated								Number × type
		output	voltage	current						
	HZ	KW	V	A	KG	dB(A)	m <sup>3</sup> /h	mbar	mbar	
4GH 210-H16	50	0.55	200-240 Δ /345-415Y	2.42 Δ /1.4Y	16	57	47	-230	290	1 x 2BX2 110...141
	60	0.63	220-275 Δ /380-480Y	2.91 Δ /1.68Y		62	57	-270	320	1 x 2BX2 114...142
4GH 310-H16	50	0.55	200-240 Δ /345-415Y	2.42 Δ /1.4Y	16	57	66	-250	250	1 x 2BX2 110...141
	60	0.63	220-275 Δ /380-480Y	2.91 Δ /1.68Y		62	80	-260	250	1 x 2BX2 114...142
4GH 310-H26	50	0.81	200-240 Δ /345-415Y	3.15 Δ /1.82Y	17	57	66	-280	350	1 x 2BX2 110...141
	60	0.94	220-275 Δ /380-480Y	3.6 Δ /2.1Y		62	80	-340	360	1 x 2BX2 114...142
4GH 410-H16	50	1.1	200-240 Δ /345-415Y	4.25 Δ /2.45Y	23	58	87	-300	380	1 x 2BX2 110...141
	60	1.3	220-275 Δ /380-480Y	5.02 Δ /2.9Y		62	105	-340	370	1 x 2BX2 114...142
4GH 510-H16	50	1.5	200-240 Δ /345-415Y	5.85 Δ /3.4Y	26	64	120	-310	360	1 x 2BX2 110...141
	60	1.75	220-275 Δ /380-480Y	6.83 Δ /3.95Y		68	145	-340	320	1 x 2BX2 114...142
4GH 510-H26	50	2.2	200-240 Δ /345-415Y	8.14 Δ /4.7Y	29	64	120	-310	430	1 x 2BX2 110...141
	60	2.55	220-275 Δ /380-480Y	9.21 Δ /5.32Y		68	145	-360	480	1 x 2BX2 114...142
4GH 610-H16	50	2.2	200-240 Δ /345-415Y	8.14 Δ /4.7Y	32	65	165	-340	360	1 x 2BX2 110...141
	60	2.55	220-275 Δ /380-480Y	9.21 Δ /5.32Y		71	195	-360	320	1 x 2BX2 114...142
4GH 610-H36	50	3.3	200-240 Δ /345-415Y	13.3 Δ /7.65Y	35	65	165	-340	480	1 x 2BX2 110...141
	60	3.8	220-275 Δ /380-480Y	12.04 Δ /6.95Y		71	195	-380	530	1 x 2BX2 114...142

# 技术参数图表

## Technical Parameters

下面的性能曲线是在抽吸 15°C 空气，排气压力 1013mbar 的工况下测出的，允差 ± 10%，吸入空气和环境温度不超过 25°C 时，仍可达到图示总压差。

The performance curves are valid for pumping air at 15°C at the inlet flanges with an air pressure of 1013 mbar and atolerance of ±10%. The total pressure differences are valid up to an intake and ambient tempratru of 25°C .





# 气环风机的选型和订购参数

Side channel blower selection and ordering parameters

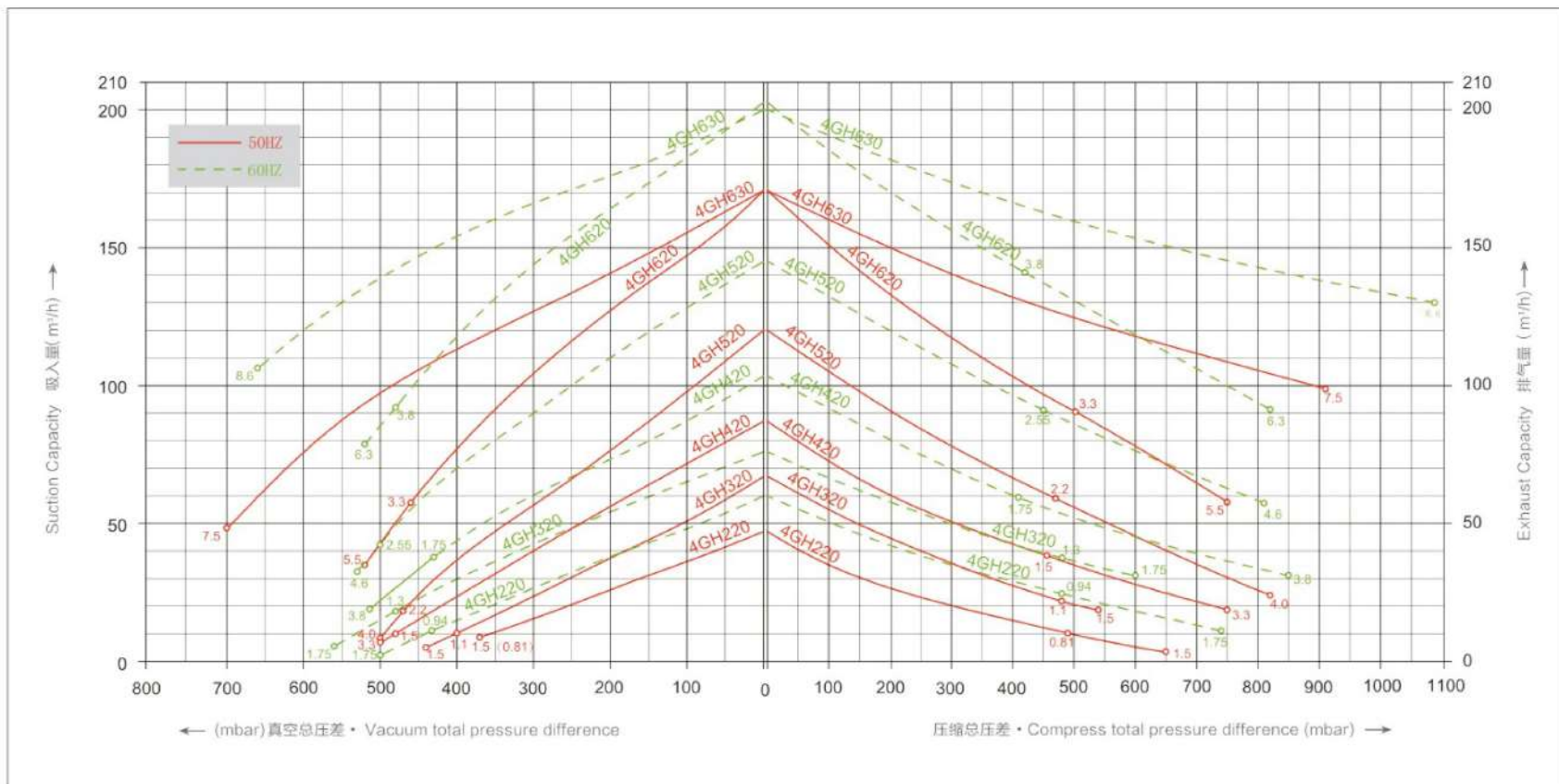
订购型号	电机				重量	噪音	最大流量	最高真空	最高压力	卸压阀
	频率	额定								数目 × 型号
		输出功率	电压	电流						
Order No.	Frequency	MOTOR Rated			weight approx	Sound pressure level	Maximum airflow	Maximum Vacuum	Maximum pressure	Pressure relief valve
		output	voltage	current						Number × type
	HZ	KW	V	A	KG	dB(A)	m <sup>3</sup> /h	mbar	mbar	
4GH 220-H26	50	0.81	200-240 Δ /345-415Y	3.15 Δ /1.82Y	24	58	47	-370	490	1 x 2BX2 110...141
	60	0.94	220-275 Δ /380-480Y	3.6 Δ /2.1Y		62	60	-440	480	1 x 2BX2 114...142
4GH 220-H56	50	1.5	200-240 Δ /345-415Y	5.85 Δ /3.4Y	28	58	47	-370	650	1 x 2BX2 110...141
	60	1.75	220-275 Δ /380-480Y	6.83 Δ /3.95Y		62	60	-500	740	1 x 2BX2 114...142
4GH 320-H46	50	1.1	200-240 Δ /345-415Y	4.25 Δ /2.45Y	29	59	65	-400	480	1 x 2BX2 110...141
	60	1.3	220-275 Δ /380-480Y	5.02 Δ /2.9Y		63	76	-480	480	1 x 2BX2 114...142
4GH 320-H56	50	1.5	200-240 Δ /345-415Y	5.85 Δ /3.4Y	30	59	65	-440	540	1 x 2BX2 110...141
	60	1.75	220-275 Δ /380-480Y	6.83 Δ /3.95Y		63	76	-560	600	1 x 2BX2 114...142
4GH 420-H26	50	3.3	200-240 Δ /345-415Y	5.85 Δ /3.4Y	33	61	87	-480	450	1 x 2BX2 110...141
	60	3.8	220-275 Δ /380-480Y	6.83 Δ /3.95Y		66	105	-430	410	1 x 2BX2 114...142
4GH 420-H56	50	2.2	200-240 Δ /345-415Y	13.3 Δ /7.65Y	39	61	87	-500	750	1 x 2BX2 110...141
	60	2.55	220-275 Δ /380-480Y	12.04 Δ /6.95Y		66	105	-510	850	1 x 2BX2 114...142
4GH 520-H26	50	2.2	200-240 Δ /345-415Y	8.14 Δ /4.7Y	40	64	120	-470	460	1 x 2BX2 110...141
	60	2.55	220-275 Δ /380-480Y	9.21 Δ /5.32Y		70	145	-500	450	1 x 2BX2 114...142
4GH 520-H77	50	4.0	345-415 Δ /600-720Y	8.05 Δ /4.65Y	51	65	120	-500	820	1 x 2BX2 110...141
	60	4.6	380-480 Δ /660-720Y	9.26 Δ /5.35Y		71	145	-530	810	1 x 2BX2 114...142
4GH 620-H36	50	5.5	200-240 Δ /345-415Y	13.3 Δ /7.65Y	48	67	165	-460	500	1 x 2BX2 110...141
	60	6.3	220-275 Δ /380-480Y	12.04 Δ /6.95Y		71	195	-480	420	1 x 2BX2 114...142
4GH 620-H57	50	5.5	345-415 Δ /600-720Y	10.7 Δ /6.18Y	65	68	165	-520	750	1 x 2BX2 110...141
	60	6.3	380-480 Δ /660-720Y	12.3 Δ /7.1Y		72	195	-520	820	1 x 2BX2 114...142
4GH 630-H67	50	7.5	345-415 Δ /600-720Y	14.3 Δ /8.26Y	86	72	170	-700	910	1 x 2BX2 110...141
	60	8.6	380-480 Δ /660-720Y	16.7 Δ /9.64Y		76	200	-660	1080	1 x 2BX2 114...142

# 技术参数图表

## Technical Parameters

下面的性能曲线是在抽吸 15°C 空气，排气压力 1013mbar 的工况下测出的，允差 ± 10%，吸入空气和环境温度不超过 25°C 时，仍可达到图示总压差。

The performance curves are valid for pumping air at 15°C at the inlet flanges with an air pressure of 1013 mbar and tolerance of ± 10%. The total pressure differences are valid up to an intake and ambient temperature of 25°C.



# 气环风机尺寸

Dimensions for side channel blower

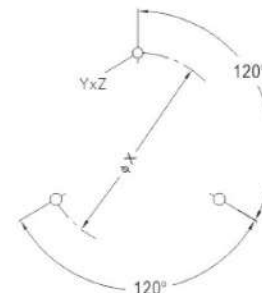
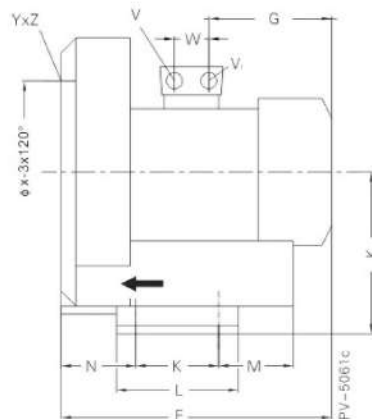
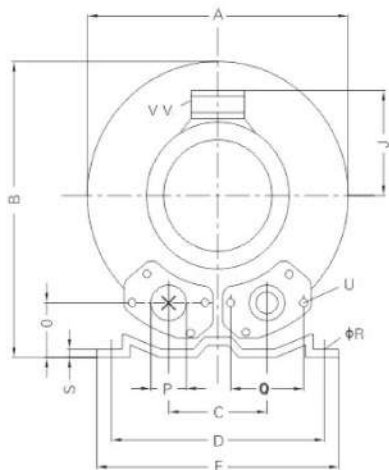
## 尺寸 / DIMENSION

### 2GH系列 尺寸

2GH-series dimension ----- 35-44

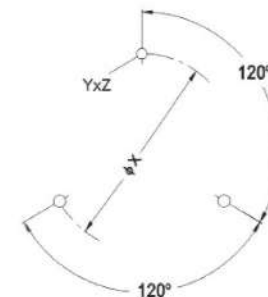
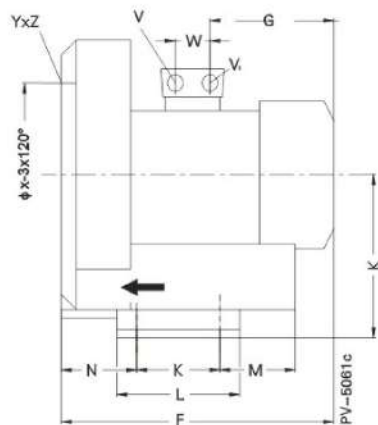
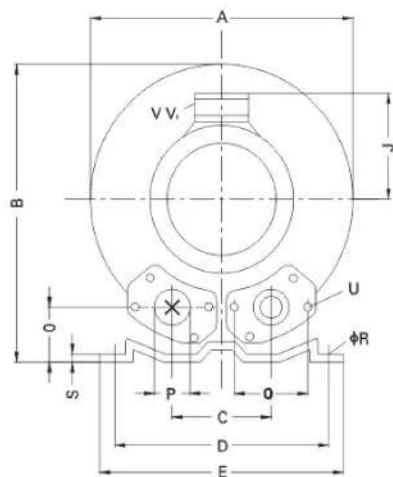
### 4GH系列 尺寸

4GH-series dimension ----- 45-46

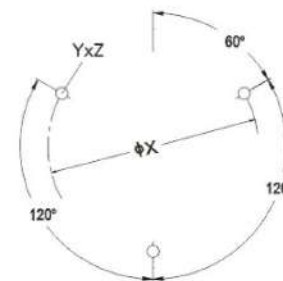
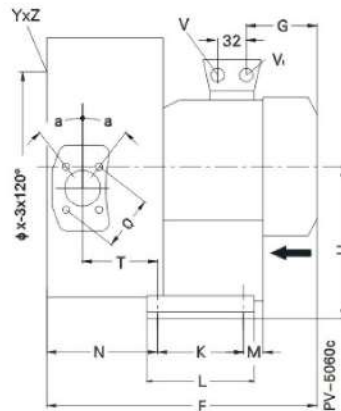
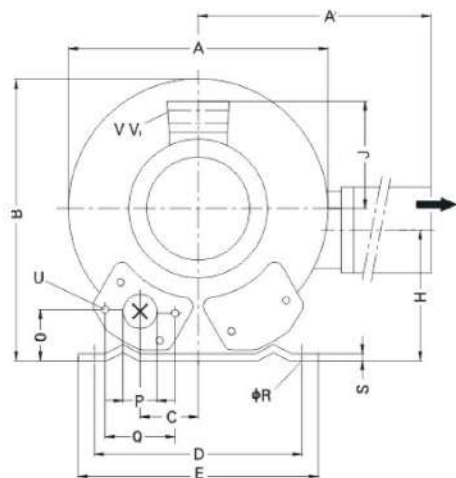


Type	Phases	(mm)																				X - Holes	(mm)			
型号	相位	A	B	C	D	E	F	G	H	J	K	L	M	N	O	P	Q	φR	S	U	V	V <sub>1</sub>	Y × Z	φX	W	
2GH 210-H06	3 ~	246	247	90	205	230	229	102	128	108	83	108	99	71	39	G1½(15deep)	64	10	3	M6 × 17	M16 × 1.5	M25 × 1.5	M6 × 15	0°/120°/240°	140	32
2GH 210-H15	1 ~	246	247	90	205	230	251	120	128	118	83	108	99	71	39	G1½(15deep)	64	10	3	M6 × 17	M16 × 1.5	M25 × 1.5	M6 × 15	0°/120°/240°	140	32
2GH 210-H16	3 ~	246	247	90	205	230	251	120	128	118	83	108	99	71	39	G1½(15deep)	64	10	3	M6 × 17	M16 × 1.5	M25 × 1.5	M6 × 15	0°/120°/240°	140	32
2GH 210-H11	1 ~	246	247	90	205	230	251	120	128	118	83	108	99	71	39	G1½(15deep)	64	10	3	M6 × 17	M16 × 1.5	M25 × 1.5	M6 × 15	0°/120°/240°	140	32
2GH 230-H06	3 ~	246	247	90	205	230	242	102	128	108	83	108	99	82	39	G1½(15deep)	64	10	3	M6 × 17	M16 × 1.5	M25 × 1.5	M6 × 15	0°/120°/240°	140	32
2GH 230-H16	3 ~	246	247	90	205	230	262	120	128	118	83	108	99	82	39	G1½(15deep)	64	10	3	M6 × 17	M16 × 1.5	M25 × 1.5	M6 × 15	0°/120°/240°	140	32
2GH 230-H26	3 ~	246	247	90	205	230	262	120	128	118	83	108	99	82	39	G1½(15deep)	64	10	3	M6 × 17	M16 × 1.5	M25 × 1.5	M6 × 15	0°/120°/240°	140	32
2GH 230-V15	1 ~	246	247	90	205	230	262	120	128	118	83	108	99	82	39	G1½(15deep)	64	10	3	M6 × 17	M16 × 1.5	M25 × 1.5	M6 × 15	0°/120°/240°	140	32
2GH 230-A11	1 ~	246	247	90	205	230	262	120	128	118	83	108	99	82	39	G1½(15deep)	64	10	3	M6 × 17	M16 × 1.5	M25 × 1.5	M6 × 15	0°/120°/240°	140	32
2GH 310-H06	3 ~	268	272	93	205	230	255	120	141	118	83	108	104	69	41	G1½(15deep)	64	10	3	M6 × 17	M16 × 1.5	M25 × 1.5	M6 × 15	0°/120°/240°	160	32
2GH 310-H16	3 ~	268	272	93	205	230	255	120	141	118	83	108	104	69	41	G1½(15deep)	64	10	3	M6 × 17	M16 × 1.5	M25 × 1.5	M6 × 15	0°/120°/240°	160	32
2GH 310-A01	1 ~	268	272	93	205	230	255	120	141	118	83	108	104	69	41	G1½(15deep)	64	10	3	M6 × 17	M16 × 1.5	M25 × 1.5	M6 × 15	0°/120°/240°	160	32
2GH 310-A11	1 ~	268	272	93	205	230	255	120	141	118	83	108	104	69	41	G1½(15deep)	64	10	3	M6 × 17	M16 × 1.5	M25 × 1.5	M6 × 15	0°/120°/240°	160	32
2GH 330-H06	3 ~	268	272	93	205	230	270	120	141	118	83	108	104	85	41	G1½(15deep)	64	10	3	M6 × 17	M16 × 1.5	M25 × 1.5	M6 × 15	0°/120°/240°	160	32
2GH 330-H16	3 ~	268	272	93	205	230	270	120	141	118	83	108	104	85	41	G1½(15deep)	64	10	3	M6 × 17	M16 × 1.5	M25 × 1.5	M6 × 15	0°/120°/240°	160	32
2GH 330-A11	1 ~	268	272	93	205	230	270	120	141	118	83	108	104	85	41	G1½(15deep)	64	10	3	M6 × 17	M16 × 1.5	M25 × 1.5	M6 × 15	0°/120°/240°	160	32

## 2GH 410./2GH430./2GH490.

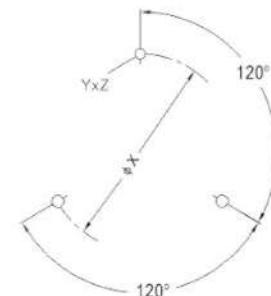
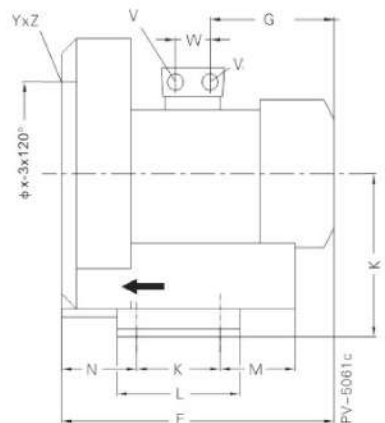
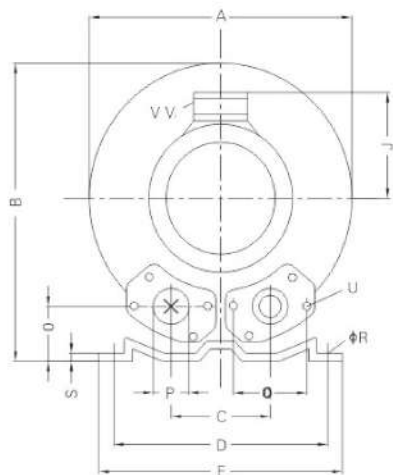


Type	Phases	(mm)																				X - Holes	(mm)			
型号	相位	A	B	C	D	E	F	G	H	J	K	L	M	N	O	P	Q	φR	S	U	V	V <sub>1</sub>	Y × Z	φX	W	
2GH 410-A11	1 ~	286	302	115	225	255	318	165	154	128	95	130	70	75	46	G1½(15deep)	72	12	3	M6 × 19	M16 × 1.5	M25 × 1.5	M6 × 15	0°/120°/240°	174	32
2GH 410-A21	1 ~	286	302	115	225	255	318	165	154	128	95	130	70	75	46	G1½(15deep)	72	12	3	M6 × 19	M16 × 1.5	M25 × 1.5	M6 × 15	0°/120°/240°	174	32
2GH 410-V25	1 ~	286	302	115	225	255	318	165	154	128	95	130	70	75	46	G1½(15deep)	72	12	3	M6 × 19	M16 × 1.5	M25 × 1.5	M6 × 15	0°/120°/240°	174	32
2GH 410-H06	3 ~	286	302	115	225	255	264	120	154	118	95	130	70	75	46	G1½(15deep)	72	12	3	M6 × 19	M16 × 1.5	M25 × 1.5	M6 × 15	0°/120°/240°	174	32
2GH 410-H16	3 ~	286	302	115	225	255	318	165	154	128	95	130	70	75	46	G1½(15deep)	72	12	3	M6 × 19	M16 × 1.5	M25 × 1.5	M6 × 15	0°/120°/240°	174	32
2GH 410-H26	3 ~	286	302	115	225	255	318	165	154	128	95	130	70	75	46	G1½(15deep)	72	12	3	M6 × 19	M16 × 1.5	M25 × 1.5	M6 × 15	0°/120°/240°	174	32
2GH 430-A11	1 ~	286	302	115	225	255	337	165	154	128	95	130	70	75	46	G1½(15deep)	72	12	3	M6 × 19	M16 × 1.5	M25 × 1.5	M6 × 15	0°/120°/240°	174	32
2GH 430-A21	1 ~	286	302	115	225	255	337	165	154	128	95	130	70	75	46	G1½(15deep)	72	12	3	M6 × 19	M16 × 1.5	M25 × 1.5	M6 × 15	0°/120°/240°	174	32
2GH 430-H06	3 ~	286	302	115	225	255	283	120	154	118	95	130	70	75	46	G1½(15deep)	72	12	3	M6 × 19	M16 × 1.5	M25 × 1.5	M6 × 15	0°/120°/240°	174	32
2GH 430-H16	3 ~	286	302	115	225	255	337	165	154	128	95	130	70	75	46	G1½(15deep)	72	12	3	M6 × 19	M16 × 1.5	M25 × 1.5	M6 × 15	0°/120°/240°	174	32
2GH 430-H06	3 ~	286	302	115	225	255	337	165	154	128	95	130	70	75	46	G1½(15deep)	72	12	3	M6 × 19	M16 × 1.5	M25 × 1.5	M6 × 15	0°/120°/240°	174	32
2GH 410-V25	1 ~	286	302	115	225	255	337	165	154	128	95	130	70	75	46	G1½(15deep)	72	12	3	M6 × 19	M16 × 1.5	M25 × 1.5	M6 × 15	0°/120°/240°	174	32
2GH 490-V25	1 ~	286	302	115	225	255	318	165	154	128	95	130	70	75	46	G1½(15deep)	72	12	3	M6 × 19	M16 × 1.5	M25 × 1.5	M6 × 15	0°/120°/240°	174	32
2GH 490-H16	3 ~	286	302	115	225	255	264	120	154	118	95	130	70	75	46	G1½(15deep)	72	12	3	M6 × 19	M16 × 1.5	M25 × 1.5	M6 × 15	0°/120°/240°	174	32

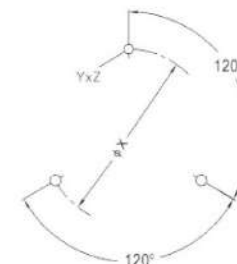
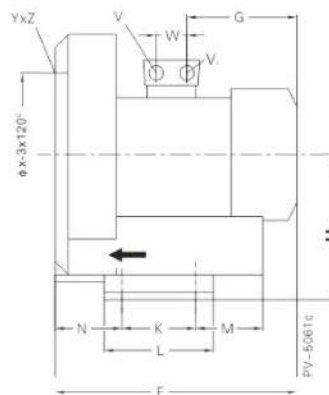
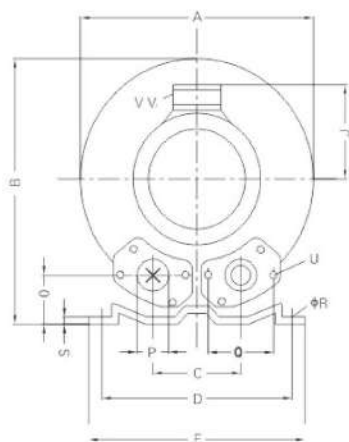


Type	Phases	(mm)																									X - Holes	(mm)		
型号	相位	A	A'	B	C	D	E	F	G	H	H'	J	K	L	M	N	O	P	Q	φR	S	T	U	V	V <sub>1</sub>	α	φX	Y×Z	W	
2GH 220-H26	3 ~	284	316	270	45	205	230	310	120	128	106	118	83	108	99	130	39	G1¼(15deep)	64	10	3	88	M6×17	M16×1.5	M25×1.5	27°	140	M6×15	51°/171°/291°	32
2GH 320-H36	3 ~	293	324	286	47	205	230	377	165	141	114	128	83	108	104	138	41	G1¼(15deep)	64	10	3	92	M6×17	M16×1.5	M25×1.5	27°	160	M6×15	51°/171°/291°	32
2GH 320-H31	1 ~	293	324	286	47	205	230	377	165	141	114	128	83	108	104	138	41	G1¼(15deep)	64	10	3	92	M6×17	M16×1.5	M25×1.5	27°	160	M6×15	51°/171°/291°	32
2GH 420-H36	3 ~	322	324	315	58	225	255	415	180	154	153	143	95	130	70	151	45	G1¼(15deep)	72	12	3	104	M6×19	M25×1.5	M25×1.5	28°	174	M6×15	51°/171°/291°	32
2GH 420-H46	3 ~	322	324	315	58	225	255	415	180	154	153	143	95	130	70	151	45	G1¼(15deep)	72	12	3	104	M6×19	M25×1.5	M25×1.5	28°	174	M6×15	51°/171°/291°	32
2GH 420-A31	1 ~	322	324	315	58	225	255	415	180	154	153	143	95	130	70	151	45	G1¼(15deep)	72	12	3	104	M6×19	M25×1.5	M25×1.5	28°	174	M6×15	51°/171°/291°	32
2GH 420-V45	1 ~	322	324	315	58	225	255	415	180	154	153	143	95	130	70	151	45	G1¼(15deep)	72	12	3	104	M6×19	M25×1.5	M25×1.5	28°	174	M6×15	51°/171°/291°	32

2GH510./2GH530./2GH590.



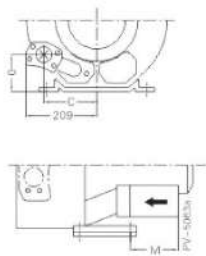
Type	Phases	(mm)																				X - Holes	(mm)			
型号	相位	A	B	C	D	E	F	G	H	J	K	L	M	N	O	$\phi P$	Q	$\phi R$	S	U	V	V <sub>1</sub>	Y × Z	$\phi X$	W	
2GH 510-A11	1 ~	334	337	120	260	295	339	165	175	18	115	155	96	87	48	55	83	14	4	M8 × 17	M16 × 1.5	M25 × 1.5	M8 × 20	0°/120°/240°	200	32
2GH 510-A21	1 ~	334	337	120	260	295	359	180	175	143	115	155	96	87	48	55	83	14	4	M8 × 17	M25 × 1.5	M25 × 1.5	M8 × 20	0°/120°/240°	200	38
2GH 510-V35	1 ~	334	337	120	260	295	359	180	175	143	115	155	96	87	48	55	83	14	4	M8 × 17	M25 × 1.5	M25 × 1.5	M8 × 20	0°/120°/240°	200	38
2GH 510-H06	3 ~	334	337	120	260	295	339	165	175	128	115	155	96	87	48	55	83	14	4	M8 × 17	M16 × 1.5	M25 × 1.5	M8 × 20	0°/120°/240°	200	32
2GH 510-H16	3 ~	334	337	120	260	295	339	165	175	128	115	155	96	87	48	55	83	14	4	M8 × 17	M16 × 1.5	M25 × 1.5	M8 × 20	0°/120°/240°	200	32
2GH 510-H26	3 ~	334	337	120	260	295	359	180	175	143	115	155	96	87	48	55	83	14	4	M8 × 17	M25 × 1.5	M25 × 1.5	M8 × 20	0°/120°/240°	200	38
2GH 510-H36	3 ~	334	337	120	260	295	359	180	175	143	115	155	96	87	48	55	83	14	4	M8 × 17	M25 × 1.5	M25 × 1.5	M8 × 20	0°/120°/240°	200	38
2GH 530-A11	1 ~	334	337	120	260	295	359	165	175	128	115	155	96	87	48	55	83	14	4	M8 × 17	M16 × 1.5	M25 × 1.5	M8 × 20	0°/120°/240°	200	32
2GH 530-A21	1 ~	334	337	120	260	295	379	180	175	143	115	155	96	87	48	55	83	14	4	M8 × 17	M25 × 1.5	M25 × 1.5	M8 × 20	0°/120°/240°	200	38
2GH 530-H06	3 ~	334	337	120	260	295	359	165	175	128	115	155	96	87	48	55	83	14	4	M8 × 17	M16 × 1.5	M25 × 1.5	M8 × 20	0°/120°/240°	200	32
2GH 530-H16	3 ~	334	337	120	260	295	359	165	175	128	115	155	96	87	48	55	83	14	4	M8 × 17	M16 × 1.5	M25 × 1.5	M8 × 20	0°/120°/240°	200	32
2GH 530-H26	3 ~	334	337	120	260	295	379	180	175	143	115	155	96	87	48	55	83	14	4	M8 × 17	M25 × 1.5	M25 × 1.5	M8 × 20	0°/120°/240°	200	38
2GH 530-H36	3 ~	334	337	120	260	295	379	180	175	143	115	155	96	87	48	55	83	14	4	M8 × 17	M25 × 1.5	M25 × 1.5	M8 × 20	0°/120°/240°	200	38
2GH 530-V35	1 ~	334	337	120	260	295	379	180	175	143	115	155	96	87	48	55	83	14	4	M8 × 17	M25 × 1.5	M25 × 1.5	M8 × 20	0°/120°/240°	200	38
2GH 590-H26	3 ~	334	337	120	260	295	339	165	175	128	115	155	96	87	48	55	83	14	4	M8 × 17	M16 × 1.5	M25 × 1.5	M8 × 20	0°/120°/240°	200	32



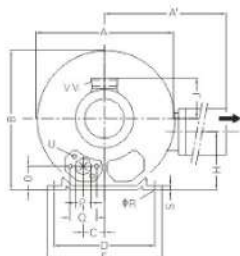
Type	Phases	(mm)																			X - Holes	(mm)				
型号	相位	A	B	C	D	E	F	G	H	J	K	L	M	N	O	φP	Q	φR	S	U	V	V <sub>1</sub>	Y×Z	φX	W	
2GH 610-H06	3 ~	360	366	122	290	325	366	180	192	143	140	180	84	94	52	56	83	13	5	M8×17	M25×1.5	M25×1.5	M8×20	0°/120°/240°	226	38
2GH 610-H16	3 ~	360	366	122	290	325	366	180	192	143	140	180	84	94	52	56	83	13	5	M8×17	M25×1.5	M25×1.5	M8×20	0°/120°/240°	226	38
2GH 610-H26	3 ~	360	366	122	290	325	420	226	192	165	140	180	84	94	52	56	83	13	5	M8×17	M32×1.5	M32×1.5	M8×20	0°/120°/240°	226	42
2GH 630-H06	3 ~	360	366	122	290	325	384	180	192	143	140	180	84	94	52	56	83	13	5	M8×17	M25×1.5	M25×1.5	M8×20	0°/120°/240°	226	38
2GH 630-H16	3 ~	360	366	122	290	325	384	180	192	143	140	180	84	94	52	56	83	13	5	M8×17	M32×1.5	M25×1.5	M8×20	0°/120°/240°	226	38
2GH 630-H26	3 ~	360	366	122	290	325	438	226	192	165	140	180	84	94	52	56	83	13	5	M8×17	M32×1.5	M32×1.5	M8×20	0°/120°/240°	226	42
2GH 710-A11	1 ~	382	384	125	290	325	391	180	197	143	140	180	84	109	54	55	83	15	5	M8×17	M25×1.5	M25×1.5	M10×20	0°/120°/240°	240	38
2GH 710-H06	3 ~	382	384	125	290	325	391	180	197	143	140	180	84	109	54	55	83	15	5	M8×17	M25×1.5	M25×1.5	M10×20	0°/120°/240°	240	38
2GH 710-H16	3 ~	382	384	125	290	325	391	180	197	143	140	180	84	109	54	55	83	15	5	M8×17	M25×1.5	M25×1.5	M10×20	0°/120°/240°	240	38
2GH 710-H26	3 ~	360	366	122	290	325	445	226	197	165	140	180	84	109	52	55	83	15	5	M8×17	M32×1.5	M32×1.5	M10×20	0°/120°/240°	240	42
2GH 710-H37	3 ~	360	366	122	290	325	445	226	197	165	140	180	84	109	52	55	83	15	5	M8×17	M32×1.5	M32×1.5	M10×20	0°/120°/240°	240	42
2GH 730-H06	3 ~	360	366	122	290	325	401	180	197	143	140	180	84	109	52	55	83	15	5	M8×17	M25×1.5	M25×1.5	M10×20	0°/120°/240°	240	38
2GH 730-H16	3 ~	360	366	122	290	325	401	180	197	143	140	180	84	109	52	55	83	15	5	M8×17	M25×1.5	M25×1.5	M10×20	0°/120°/240°	240	38
2GH 730-H26	3 ~	382	384	125	290	325	455	226	197	165	140	180	84	109	52	55	83	15	5	M8×17	M32×1.5	M32×1.5	M10×20	0°/120°/240°	240	42
2GH 730-H37	3 ~	382	384	125	290	325	455	226	197	165	140	180	84	109	52	55	83	15	5	M8×17	M32×1.5	M32×1.5	M10×20	0°/120°/240°	240	42
2GH 790-H26	3 ~	382	384	125	290	325	401	180	197	143	140	180	84	109	54	55	83	15	5	M8×17	M25×1.5	M25×1.5	M10×20	0°/120°/240°	240	38

## 2GH520./2GH720./2GH740.

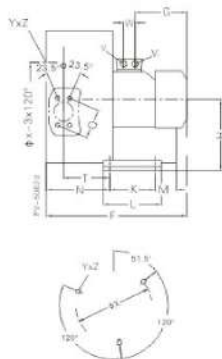
2GH  
720-4  
720-5



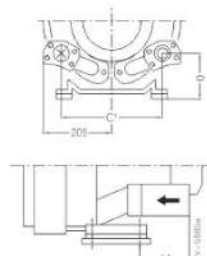
2GH  
520-4  
520-5



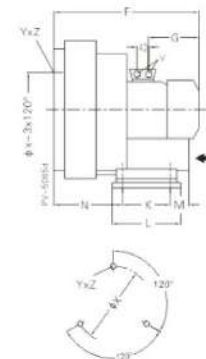
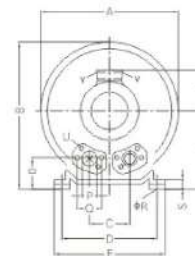
2GH  
720-1  
720-2  
720-3



2GH  
740-4  
740-5



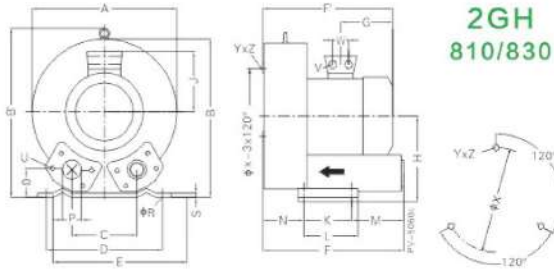
2GH  
740-3



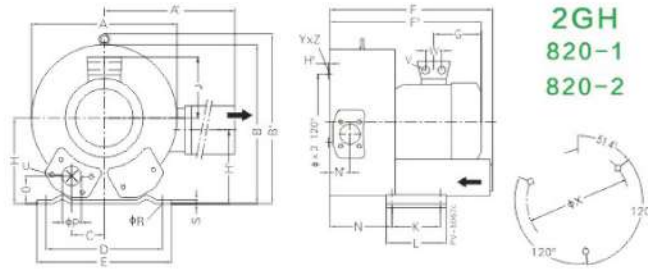
Type	Phases	(mm)																				X - Holes		(mm)					
型号	相位	A	A'	B	C	D	E	F	G	H	H'	J	K	L	M	N	O	φP	Q	φR	S	T	U	V	V <sub>i</sub>	φX	Y×Z	W	
2GH 520-H46	3 ~	372	411	371	60	260	295	499	226	175	144	165	115	155	96	171	48	55	83	14	4	116	M8×17	M32×1.5	M32×1.5	200	M8×20	51.5°/171.5°/291.5°	42
2GH 520-H57	3 ~	372	411	371	60	260	295	499	226	175	144	165	115	155	96	171	48	55	83	14	4	116	M8×17	M32×1.5	M32×1.5	200	M8×20	51.5°/171.5°/291.5°	42
2GH 720-H16	3 ~	426	426	410	63	290	325	488	180	197	162	143	140	180	84	205	53	55	83	15	5	130	M8×17	M25×1.5	M32×1.5	240	M10×20	51.5°/171.5°/291.5°	38
2GH 720-H26	3 ~	426	426	410	63	290	325	542	180	197	162	165	140	180	84	205	53	55	83	15	5	130	M8×17	M32×1.5	M32×1.5	240	M10×20	51.5°/171.5°/291.5°	42
2GH 720-H37	3 ~	426	426	410	63	290	325	542	226	197	162	165	140	180	84	205	53	55	83	15	5	130	M8×17	M32×1.5	M32×1.5	240	M10×20	51.5°/171.5°/291.5°	42
2GH 720-H47	3 ~	426	426	410	154	290	325	578	226	197	162	186	140	180	225	205	94	55	83	15	5	130	M8×17	M32×1.5	M32×1.5	240	M10×20	51.5°/171.5°/291.5°	42
2GH 720-H57	3 ~	426	426	410	154	290	325	578	241	197	162	186	140	180	225	205	94	55	83	15	5	130	M8×17	M32×1.5	M32×1.5	240	M10×20	51.5°/171.5°/291.5°	42

Type	Phases	(mm)																				X - Holes		(mm)		
型号	相位	A	B	C	C'	D	E	F	G	H	J	K	L	M	N	O	φP	Q	φR	S	U	V	φX	Y×Z	W	
2GH 740-H37	3 ~	420	410	125	—	290	325	542	226	197	165	140	180	84	205	53	55	83	15	65	M8×17	2×M32×1.5	240	M10×20	0°/120°/240°	42
2GH 740-H47	3 ~	420	468	—	308	290	325	578	241	257	186	140	180	225	205	153	55	83	15	65	M8×17	2×M32×1.5	240	M10×20	0°/120°/240°	42
2GH 740-H57	3 ~	420	468	—	308	290	325	578	226	257	186	140	180	225	205	153	55	83	15	65	M8×17	2×M32×1.5	240	M10×20	0°/120°/240°	42

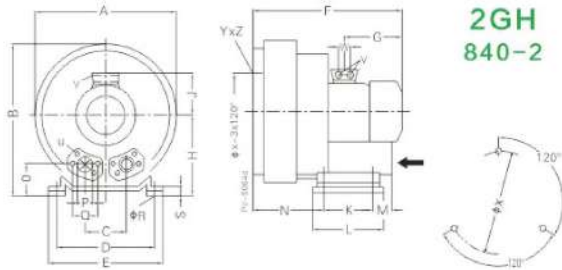
尺寸  
气环风机  
Dimensions for side  
channel blower



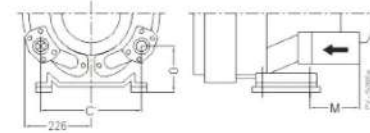
2GH  
810/830



2GH  
820-1  
820-2



2GH  
840-2



2GH  
840-3

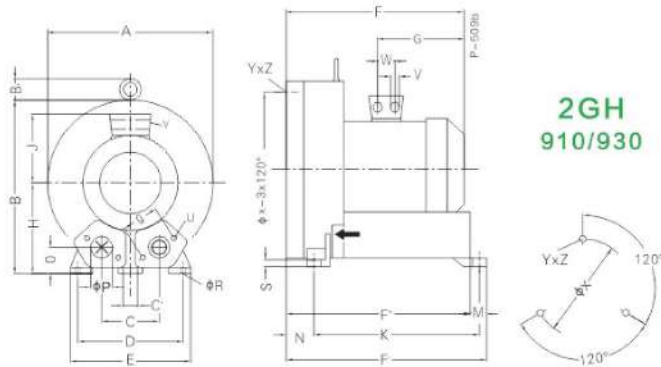
2GH  
820-3  
820-4

Type	Phases	(mm)																				X - Holes						
型号	相位	A	A'	B	B'	C	D	E	F	F'	G	H	H'	J	K	L	M	N	N'	O	ΦP	ΦR	S	V	W	ΦX	Y×Z	X - Holes
2GH 810-H07	3 ~	451	—	461	509	152	356	433	465	450	226	240	—	165	170	217	140	124	—	65	65	15	6	2×M32×1.5	42	286	M12×20	0°/120°/240°
2GH 810-H17	3 ~	451	—	461	509	152	356	433	485	477	241	240	—	186	170	217	140	124	—	65	65	15	6	2×M32×1.5	42	286	M12×20	0°/120°/240°
2GH 810-H27	3 ~	451	—	461	509	152	356	433	485	477	241	240	—	186	170	217	140	124	—	65	65	15	6	2×M32×1.5	42	286	M12×20	0°/120°/240°
2GH 820-H17	3 ~	500	549	490	509	—	356	545	598	589	241	240	199	186	170	217	140	236	84	65	65	15	6	2×M32×1.5	42	286	M12×20	58.5°/171.5°/291.5°
2GH 820-H27	3 ~	500	549	490	509	—	356	545	598	589	241	240	199	186	170	217	140	236	84	65	65	15	6	4×M32×1.5	42	286	M12×20	58.5°/171.5°/291.5°
2GH 820-H37	3 ~	500	549	490	509	—	356	545	686	694	288	240	199	239	170	217	312	212	84	105	65	15	6	4×M32×1.5	54	286	M12×20	58.5°/171.5°/291.5°
2GH 820-H47	3 ~	500	549	490	509	152	356	545	686	694	288	240	199	239	170	217	312	212	84	105	65	15	6	4×M32×1.5	54	286	M12×20	58.5°/171.5°/291.5°
2GH 830-H07	3 ~	451	—	461	509	152	356	449	481	466	226	240	—	165	170	217	140	139	—	65	65	15	6	2×M32×1.5	42	286	M12×20	0°/120°/240°
2GH 830-H17	3 ~	451	—	461	509	152	356	449	501	492	241	240	—	186	170	217	140	139	—	65	65	15	6	2×M32×1.5	42	286	M12×20	0°/120°/240°
2GH 830-H27	3 ~	451	—	461	509	152	356	449	501	492	241	240	—	186	170	217	140	139	—	65	65	15	6	2×M32×1.5	42	286	M12×20	0°/120°/240°

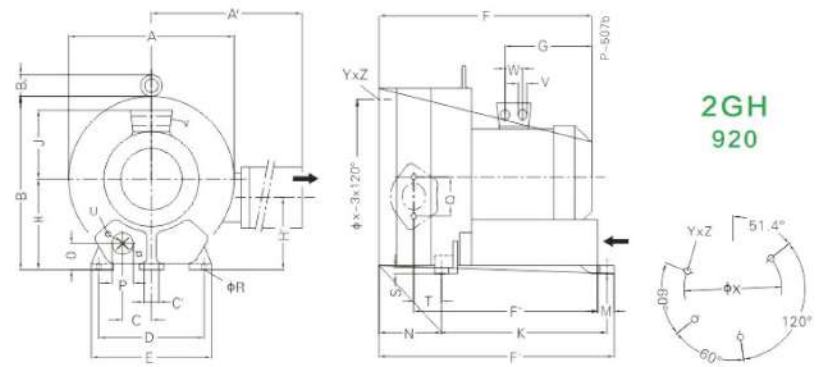
Type	Phases	(mm)																				X - Holes		
型号	相位	A	B	C	C'	D	E	F	G	H	J	K	L	M	N	O	ΦP	ΦR	S	V	W	ΦX	Y×Z	X - Holes
2GH 840-H27	3 ~	500	550	152	—	356	394	598	241	300	186	170	217	140	236	125	65	15	66	2×M32×1.5	42	286	M12×20	0°/120°/240°
2GH 840-H27	3 ~	500	550	152	336	356	394	686	288	300	239	170	217	312	211	165	65	15	66	2×M40×1.5	54	286	M12×20	0°/120°/240°

尺寸

2GH910./2GH920./2GH930.



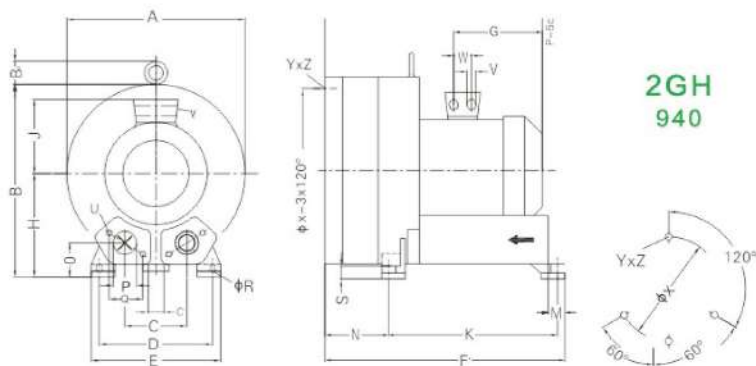
2GH  
910/930



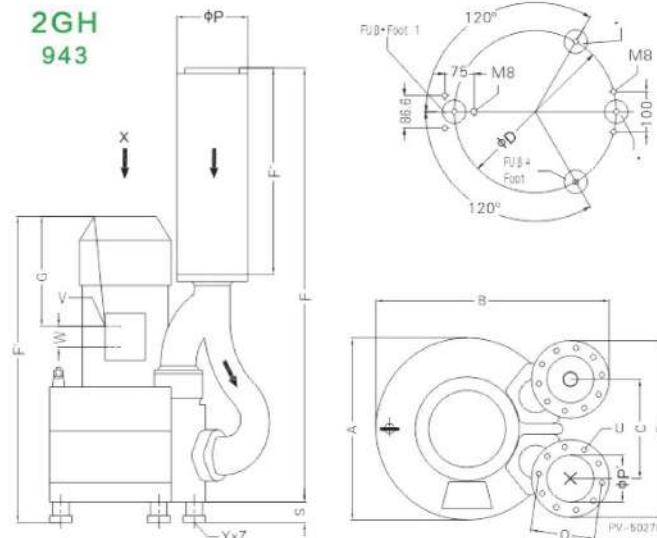
2GH  
920

Type	Phases	(mm)																				X - Holes						
型号	相位	A	B	B'	C	C'	D	E	F	F'	F''	G	H	J	K	M	N	O	φP	Q	φR	S	U	V	W	φX	Y × Z	
2GH 910-H07	3 ~	550	569	55	207	15	360	415	532	644	605	268	300	186	533	39	89	92	100	150	15	21	M12 × 30	2 × M32 × 1.5	42	490	M12 × 30	0°/120°/240°
2GH 910-H17	3 ~	550	569	55	207	15	360	415	611	644	605	345	300	239	533	39	89	92	100	150	15	21	M12 × 30	2 × M40 × 1.5	54	490	M12 × 30	0°/120°/240°
2GH 910-H37	3 ~	550	569	55	207	15	360	415	611	644	605	345	300	239	533	39	89	92	100	150	15	21	M12 × 30	2 × M40 × 1.5	54	490	M12 × 30	0°/120°/240°
2GH 930-H07	3 ~	550	569	55	207	15	360	415	570	682	643	268	300	186	533	39	127	92	100	150	15	21	M12 × 30	2 × M32 × 1.5	42	490	M12 × 30	0°/120°/240°
2GH 930-H17	3 ~	550	569	55	207	15	360	415	649	682	643	345	300	239	533	39	127	92	100	150	15	21	M12 × 30	2 × M40 × 1.5	54	490	M12 × 30	0°/120°/240°
2GH 930-H37	3 ~	550	569	55	207	15	360	415	649	682	643	345	300	239	533	39	127	92	100	150	15	21	M12 × 30	2 × M40 × 1.5	54	490	M12 × 30	0°/120°/240°

Type	Phases	(mm)																				X - Holes								
型号	相位	A	A'	B	B'	C	C'	D	E	F	F'	F''	G	H	H'	J	K	M	N	O	φP	Q	φR	S	U	V	W	φX	Y × Z	
2GH 920-H17	3 ~	615	780	607	55	103.5	15	360	415	752	786	634	345	300	234	239	533	39	230	92	100	150	15	21	M12 × 30	2 × M40 × 1.5	54	490	M12 × 30	51°/120°/240°
2GH 920-H27	3 ~	615	780	607	55	103.5	15	360	415	752	786	634	345	300	234	239	533	39	230	92	100	150	15	21	M12 × 30	2 × M40 × 1.5	54	490	M12 × 30	51°/120°/240°
2GH 920-H37	3 ~	615	780	607	55	103.5	15	360	415	752	786	634	345	300	234	239	533	39	230	92	100	150	15	21	M12 × 30	2 × M40 × 1.5	54	490	M12 × 30	51°/120°/240°
2GH 920-H47	3 ~	615	780	607	55	103.5	15	360	415	812	786	634	345	300	234	239	533	39	230	92	100	150	15	21	M12 × 30	2 × M40 × 1.5	54	490	M12 × 30	51°/120°/240°



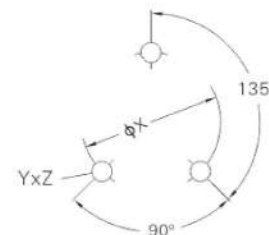
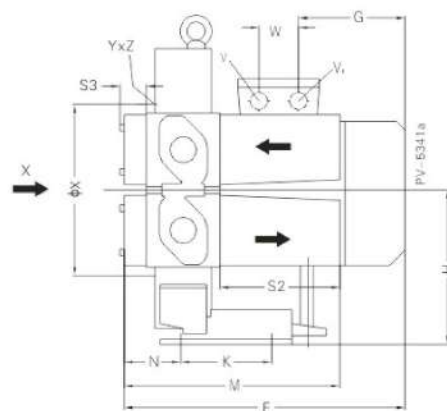
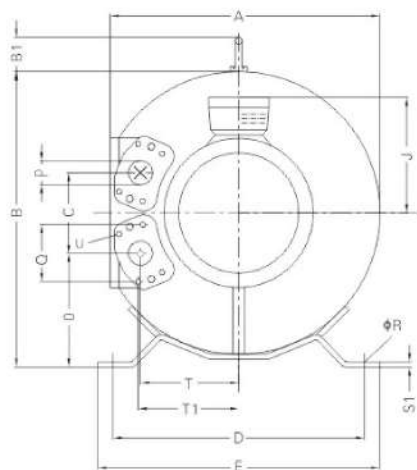
2GH  
943



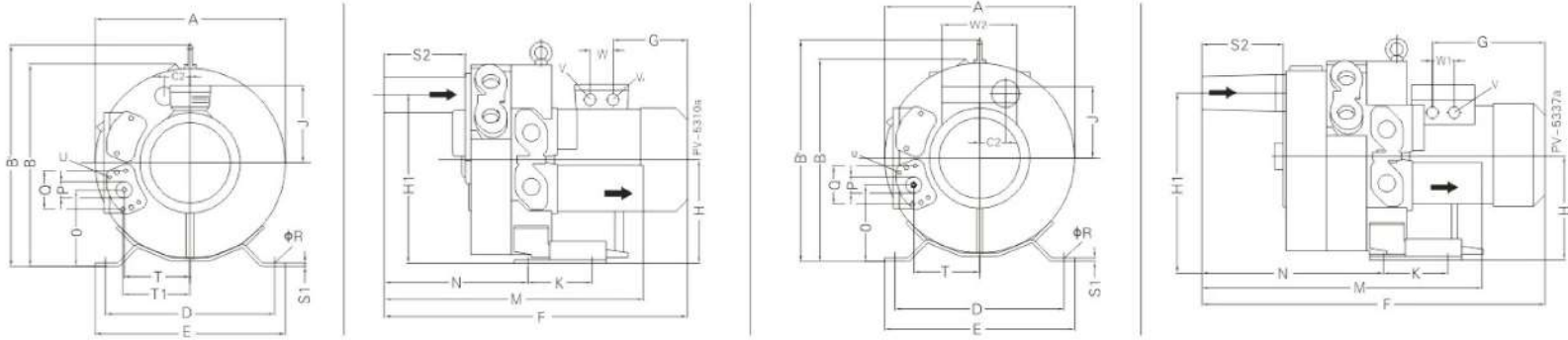
Type	Phases	(mm)																				X - Holes					
型号	相位	A	B	B'	C	C'	D	E	F	F'	G	H	J	K	M	N	O	ΦP	Q	ΦR	S	U	V	W	ΦX	Y×Z	
2GH 940-H27	3 ~	615	657	16	207	15	360	415	752	786	345	350	239	533	39	280	142	100	140	15	71	M12×35	2×M40×1.5	54	490	M12×30	0°/120°/240°
2GH 940-H37	3 ~	615	657	16	207	15	360	415	752	786	345	350	239	533	39	280	142	100	140	15	71	M12×35	2×M40×1.5	54	490	M12×30	0°/120°/240°
2GH 940-H47	3 ~	615	657	16	207	15	360	415	812	786	345	350	239	533	39	280	142	100	140	15	71	M12×35	2×M40×1.5	54	490	M12×30	0°/120°/240°

Type	Phases	(mm)															
型号	相位	A	B	C	D	E	F	F'	G	P	P'	Q	S	U	V	W	Y×Z
2GH 943-H27	3 ~	615	723	307	490	526	1201	848	291	219	135	201	58	M8×40	2×M40×1.5	54	M12×10.5
2GH 943-H37	3 ~	615	723	307	490	526	1201	848	291	219	135	201	58	M8×40	2×M40×1.5	54	M12×10.5
2GH 943-H47	3 ~	615	723	307	490	526	1201	908	351	219	135	201	58	M8×40	2×M40×1.5	54	M12×10.5

# 4GH 210./4GH310./4GH410/4GH510./4GH610.



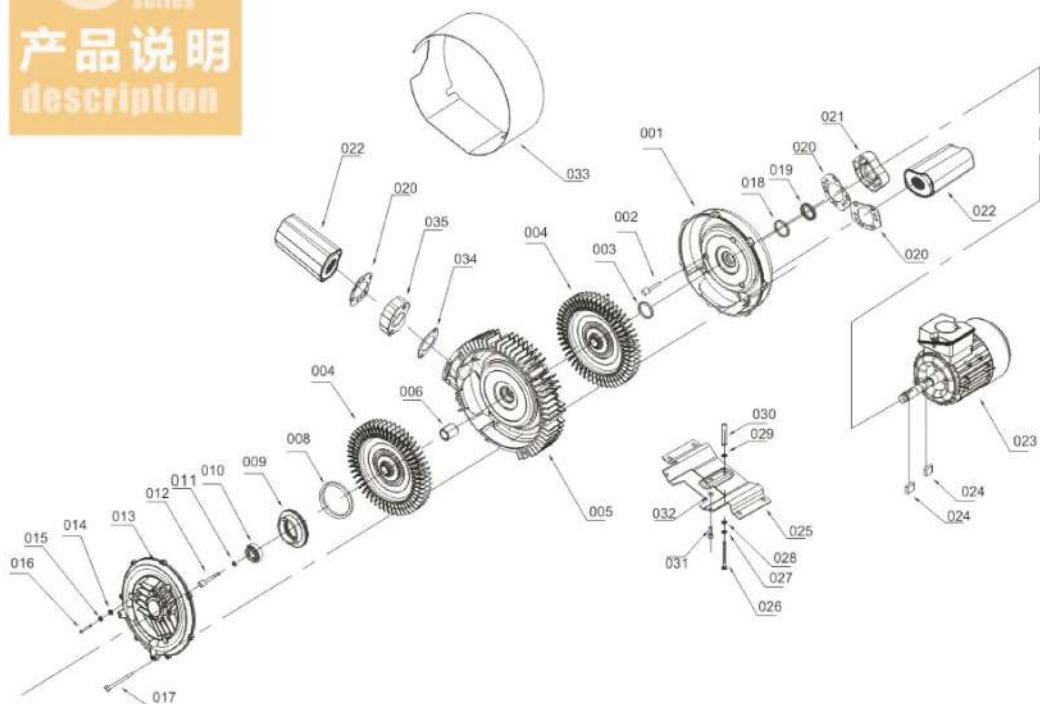
Type	Phases	(mm)																											
型号	相位	A	B	B <sub>1</sub>	C	D	E	F	G	H	J	K	M	N	O	P	Q	φR	S <sub>1</sub>	S <sub>2</sub>	S <sub>3</sub>	T	T <sub>1</sub>	U	V	V <sub>1</sub>	W	φX	Y × Z
4GH 210-H16	3 ~	294	319	39	87	260	298	287	120	167	118	105	274	66	124	G1¼(15deep)	64	14	4	140	31	105	107	M6 × 17	M25 × 1.5	M16 × 1.5	32	153	M6 × 15
4GH 210-V75	1 ~	294	319	39	87	260	298	287	120	167	118	105	274	66	124	G1¼(15deep)	64	14	4	140	31	105	107	M6 × 17	M25 × 1.5	M16 × 1.5	32	153	M6 × 15
4GH 310-H16	3 ~	313	339	39	94	290	325	289	120	177	118	105	278	68	130	G1¼(15deep)	64	14	4	140	31	114	116	M6 × 17	M25 × 1.5	M16 × 1.5	32	154	M6 × 15
4GH 310-H26	3 ~	313	339	39	94	290	325	343	165	177	128	105	278	68	130	G1¼(15deep)	64	14	4	140	31	114	116	M6 × 17	M25 × 1.5	M16 × 1.5	32	154	M6 × 15
4GH 310-H71	1 ~	313	339	39	94	290	325	343	165	177	128	105	278	68	130	G1¼(15deep)	64	14	4	140	31	114	116	M6 × 17	M25 × 1.5	M16 × 1.5	32	154	M6 × 15
4GH 310-H75	1 ~	313	339	39	94	290	325	343	165	177	128	105	278	68	130	G1¼(15deep)	64	14	4	140	31	114	116	M6 × 17	M25 × 1.5	M16 × 1.5	32	154	M6 × 15
4GH 410-H16	3 ~	346	375	38	103	315	350	345	165	195	128	130	282	69	143	G1¼(15deep)	64	14	4	140	31	125	127	M6 × 17	M25 × 1.5	M16 × 1.5	32	185	M6 × 15
4GH 410-A41	1 ~	346	375	38	103	315	350	345	165	195	128	130	282	69	143	G1¼(15deep)	64	14	4	140	31	125	127	M6 × 17	M25 × 1.5	M16 × 1.5	32	185	M6 × 15
4GH 510-H16	3 ~	368	395	39	114	328	363	347	180	205	143	152	287	69	148	G1¼(15deep)	64	14	5	140	31	137	138	M6 × 17	M25 × 1.5	M16 × 1.5	38	195	M8 × 15
4GH 510-H26	3 ~	368	395	39	114	328	363	347	180	205	143	152	287	69	148	G1¼(15deep)	64	14	5	140	31	137	138	M6 × 17	M25 × 1.5	M16 × 1.5	38	195	M8 × 15
4GH 610-H16	3 ~	418	455	39	127	371	406	376	180	235	143	152	293	73	172	G1¼(15deep)	64	14	5	140	31	153	155	M6 × 17	M25 × 1.5	M16 × 1.5	38	230	M8 × 15
4GH 610-H36	3 ~	418	455	39	127	371	406	430	226	235	165	152	293	73	172	G1¼(15deep)	64	14	5	140	31	153	155	M6 × 17	M25 × 1.5	M16 × 1.5	42	230	M8 × 15



Type	Phases	(mm)																										
型号	相位	A	B	B'	C <sub>2</sub>	D	E	F	G	H	H <sub>1</sub>	J	K	M	N	O	P	Q	φR	S <sub>1</sub>	S <sub>2</sub>	S <sub>3</sub>	T	T <sub>1</sub>	U	V	V <sub>1</sub>	W
4GH 220-H26	3 ~	313	326	359	43	260	298	516	120	167	272	118	105	472	263	123	G1½(18deep)	64	14	4	161	32	105	107	M6 × 17	M16 × 1.5	M25 × 1.5	32
4GH 220-H56	3 ~	313	326	359	43	260	298	590	180	167	272	143	105	472	263	123	G1½(15deep)	64	14	4	161	32	105	107	M6 × 17	2 × M25 × 1.5	2 × M25 × 1.5	38
4GH 220-H75	1 ~	313	326	359	43	260	298	590	180	167	272	143	105	472	263	123	G1½(15deep)	64	14	4	161	32	105	107	M6 × 17	2 × M25 × 1.5	2 × M25 × 1.5	38
4GH 320-H46	3 ~	331	345	380	47	290	325	572	165	177	291	128	105	476	265	130	G1½(15deep)	64	14	4	161	32	114	116	M6 × 17	M16 × 1.5	M25 × 1.5	32
4GH 320-H56	3 ~	331	345	380	47	290	325	592	180	177	291	143	105	476	265	130	G1½(15deep)	64	14	4	161	32	114	116	M6 × 17	2 × M25 × 1.5	2 × M25 × 1.5	38
4GH 320-H75	1 ~	331	345	380	47	290	325	592	180	177	291	143	105	476	265	130	G1½(15deep)	64	14	4	161	32	125	127	M6 × 17	2 × M25 × 1.5	2 × M25 × 1.5	38
4GH 420-H26	3 ~	363	377	414	52	315	350	594	180	195	319	143	130	480	266	143	G1½(15deep)	64	14	4	161	32	125	127	M6 × 17	2 × M25 × 1.5	2 × M25 × 1.5	38
4GH 420-H56	3 ~	363	377	414	52	315	350	648	226	195	319	165	130	480	266	143	G1½(15deep)	64	14	4	161	32	125	127	M6 × 17	2 × M32 × 1.5	2 × M32 × 1.5	42
4GH 520-H26	3 ~	387	402	435	57	328	363	615	180	206	343	143	152	497	278	148	G1½(15deep)	64	14	5	161	32	137	138	M6 × 17	2 × M25 × 1.5	2 × M25 × 1.5	38
4GH 520-H77	3 ~	387	402	435	57	328	363	669	226	206	343	165	152	497	278	148	G1½(15deep)	64	14	5	161	32	137	138	M6 × 17	2 × M32 × 1.5	2 × M32 × 1.5	42
4GH 620-H36	3 ~	442	457	495	63	372	406	671	226	236	389	165	152	503	282	173	G1½(15deep)	64	14	5	161	32	153	155	M6 × 17	2 × M32 × 1.5	2 × M32 × 1.5	42
4GH 620-H57	3 ~	442	457	495	63	372	406	691	241	236	389	186	152	503	282	173	G1½(15deep)	64	14	5	161	32	153	155	M6 × 17	2 × M32 × 1.5	2 × M32 × 1.5	42

Type	(mm)																									
型号	A	B	B'	C <sub>2</sub>	D	E	F	G	H	H <sub>1</sub>	J	K	M	N	O	P	Q	φR	S <sub>1</sub>	S <sub>2</sub>	S <sub>3</sub>	T	U	V	W	
4GH 630-H67	442	402	492	63	371	46	771	241	236	389	186	152	583	362	172	G1½(15deep)	64	14	5	161	32	153	2 × M32 × 1.5	2 × M32 × 1.5	42	

# G 系列 series 产品说明 description



## 金桥通真空泵型号说明

2 GH 2 1 0 H 0 6

### 电机序列号

H6: 220-240V Δ / 345-415V Y  
H7: 三相 345-415V Δ / 600-720V Y  
A1: 单相 230V  
V5: 单相 115/230V

0: 底板安装 (可立式安装)  
3: 立式安装

1: 单叶轮  
2: 双叶轮 (串联)  
3: 单级大流量  
4: 双级增流量 (并联)

### 产品序列号

气环风机

2: 2 系列风机  
4: 4 系列风机

配件编号 / No.	配件名称 / Description	配件编号 / No.	配件名称 / Description	配件编号 / No.	配件名称 / Description
01	电机端罩 / motor end shield	13	泵盖 / pump cover	25	底板 / backplane
02	螺丝 / screw	14	O 型圈 / o-ring	26	螺丝 / screw
03	垫圈 / washer	15	垫片 / washer	27	弹簧垫片 / spring washer
04	叶轮 / impeller	16-17	螺丝 / screw	28	垫片 / washer
05	中泵体 / absorbing pump	18	毛毡圈 / felt ring	29	垫片 / washer
06	套管 / sleeve	19	油封 / oil seal	30	套管 / sleeve
08	O 型圈 / o-ring	20	纸垫片 / paper pads	31	螺丝 / screw
09	轴承座 / bearing cover	21	法兰 / flansch	32	方母 / base
10	轴承 / gasket	22	消音器整体 / silencer complete	33	斗篷 / cloak
11	垫片 / washer	23	电机总成 / motor assembly	34	纸垫片 / paper pads
12	螺丝 / screw	24	平行键 / parallel key	35	法兰 / flansch

### 备注

本产品目录中的各个产品有如下方面应用：■资本货物工业 ■消费品工业 ■农业工业 ■建筑业 ■综合贸易

这类设备通常包括裸露部分，由于它们在工作过程的很多情况下为运动部件或旋转部件，所以很危险，此类部件可能导致严重的人身伤亡或设备故障，例如未经许可的防护罩的拆除，不正当使用，操作不当或维护不足。

### 因此负责安全的工作人员必须确保

- 只有有资格的相关人员才能操作此类设备。■资格人员在操作这些设备是已经完全熟悉操作手册并且能系统地按照手册的指导去操作。
- 非资格人员不允许操作此类设备。

### 资格人员

是指有厂区安全负责人授权的人员。他们根据自有的培训、经验、相关标准的知识及对事故预防的能力来完成某项必要的工作，同时能意识到潜在的危險并采取必要的防范措施。有必要的生命急救知识，熟悉相关的生命救护设备。

DIN VDE 0105 或 IGC 364 规定，非资格人员不得从事电气设备的工作。随设备而来的操作说明书不可能包含所有涉及要素的详细信息，尤其不可能把每一种可能的安装，操作及维护方式都涉及到。因此这些操作手册只包括能让资格人员正确操作机器或设备的必要信息。

因此有必要澄清一下，如果缺乏产品的详细参数，请根据此产品的设备类型和加工代号，联系我们。

### NOTE

The products in this catalogue are used in the ■ capital goods industry ■ consumer goods industry and in such sectors as ■ agriculture ■ the building industry and ■ allied trades. This equipment has bare parts that are dangerous because they are live during operation; in some cases these are moving or rotating parts. Such parts could cause severe injury to persons and severe damage to property, for example in the event of unauthorised removal of protective covers, improper use, wrong operation or insufficient maintenance.

### The people in charge of safety must therefore guarantee that

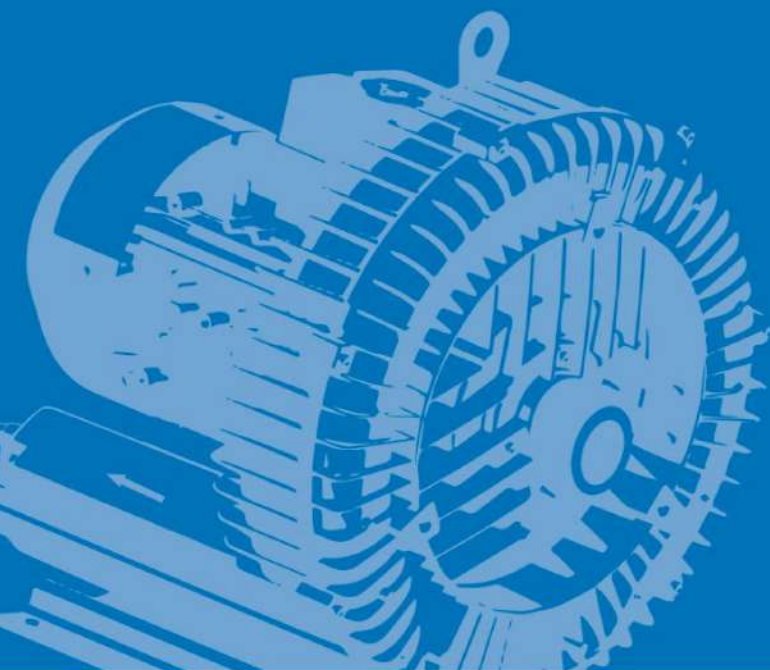
- only qualified personnel are allowed to work on or around this equipment;
- these persons have access at all times to the operating instructions supplied and all other elements of the product documentation when working with the equipment, and are obliged to systematically follow the instructions given therein;
- unqualified personnel are not allowed to work on these machines or equipment or in the vicinity thereof.

### Qualified personnel

Are persons who—on account of their training, experience, instruction, knowledge of the appropriate standards, specifications, accident prevention regulations and the operating environment—have been authorised by those responsible for plant safety to perform the necessary work and at the same time to recognise and circumvent potential hazards. Knowledge of first aid and familiarity with the pertinent life-saving equipment are also necessary.

The barring of unqualified personnel from work on heavy-current equipment is regulated by DIN VDE 0105 or IEC 364. For the sake of clarity, the operating instructions supplied with the equipment cannot contain all the detailed information on possible design variants and in particular cannot take into account every conceivable type of installation, operation or maintenance. The operating instructions therefore basically contain only the information necessary to enable qualified personnel (see above) to operate the machines or equipment correctly in industrial applications. In the event that the machines or equipment are intended for service outside of industry, where more exacting demands may be placed on them (such as touch protection for children), the installation work must be supplemented by further protective measures that are to be implemented locally.

Where clarifications are necessary, particularly with respect to lack of product-specific detailed information, please contact the sales office concerned, quoting the type designation and manufacturing number of the machine or equipment.



叶锦耀  
Marco Yeap  
Director  
+6019-777 7771

Tel: +607-238 3838 Fax: +607-234 2323

Email: [sales@kskvacuum.com](mailto:sales@kskvacuum.com)

KSK VACUUM TECHNOLOGY SDN BHD (co. No 341866-M)  
No.26, Jalan Kempas 2/3, Kawasan Perindustrian Tanah Tampoi,  
81200 Johor Bahru, Johor.